

Creating Prescriptions

Create a Field Boundary:

NOTE: A Field Boundary must be created for the current or a previous year in order to create a prescription. If a field boundary is not present, following these steps.

1. Click on “Data” at the top of JDOffice.
2. Click on “Create Field Boundaries”.
3. Select a Farm, Field and Task or Crop Boundary and click OK.



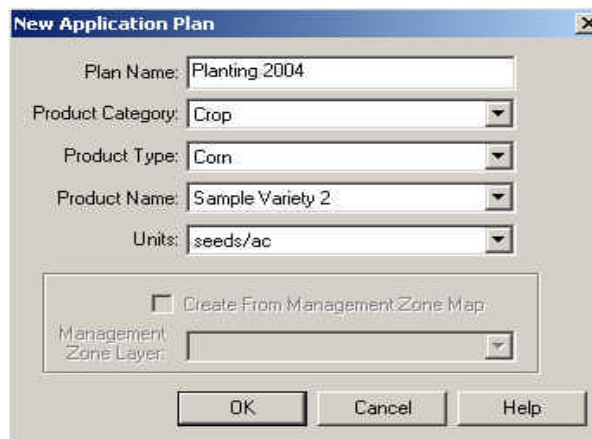
NOTE: Field boundaries can also be created with Field Doc.

Create a New Application Plan

1. Open the Layers window.
2. Click Add.
3. Click on “New Application Plan” and click OK.

NOTE: If “New Application Plan” is not available, a field boundary must be created.

4. Give the prescription a unique Plan Name, choose a Product Category, Type, Name, Units and click OK.



NOTE: A warning may appear stating the selected variety the weight per 1000 seed is zero. Select Yes, the Setup Products window will appear, click on the Seeding button and define the Seeds per lb Kg.

Note: The application plan can be created from a Management Zone, but the Management Zone to Rate Table must be setup first. See How to create Prescription from a Management Zone below.

Create Polygons/Prescription Zones on the Field Map

1. Highlight the application plan in the Layers window and place a check in the edit circle. Five new tools now appear in the toolbar:
 - Rectangle Tool
 - Ellipse Tool
 - Center Pivot Tool
 - Polygon Tool
 - Bisect Tool

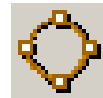
Rectangle Tool:

1. Click on the “Rectangle Tool” to make it active.
2. Click and drag the cursor to select the part of the map that you wish to alter.
3. Set the “Map Rate” and “Color” to the desired levels and click “OK”.



Ellipse Tool:

1. Click on the “Ellipse Tool” to make it active.
2. Click and drag the cursor to select the part of the map that you wish to alter.
3. Set the “Map Rate” and “Color” to the desired levels and click “OK”.



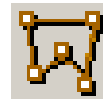
Center Pivot Tool:

1. Click on the “Center Pivot Tool” to make it active.
2. Click and drag the cursor to select the part of the map that you wish to alter.
3. Set the “Map Rate” and “Color” to the desired levels and click “OK”.



Polygon Tool:

1. Click on the “Polygon Tool” to make it active.
2. Click once for each point that outlines the area you wish to alter.
3. When finished, select the original point to close the polygon.
4. Set the “Map Rate” and “Color” to the desired levels and click “OK”.



Bisect Tool:

1. Click on the “Bisect Tool” to make it active.
2. Click on the prescription zone to highlight the boundary.
3. Click outside of the field on one side of the field.
4. Click on the other side of the field to create a line that divides the highlighted section.
5. After a successful Bisect, the polygon is treated as two separate polygons.



Edit Polygon/Prescription Zones on the Map

After a shape has been added to the map and the edit circle is checked in the layers window, new tools become available. If the tools are not available, click on the Pointer icon and then select a shape on the map. The tools below can be used once a shape or layer has been selected.

- Delete Shape
- Layer to Top
- Layer Up
- Layer Down
- Layer to Bottom
- Edit Rate

Delete Shape Tool:

Clicking this tool you will delete the selected polygon.



Layer to Top Tool:

Clicking this tool will move the selected polygon to the top.



Layer Up Tool:

Clicking this tool will move the selected polygon up.



Layer to Bottom Tool:

Clicking this tool will move the selected polygon to the bottom.



Layer Down Tool:

Clicking this tool will move the selected polygon down.



Edit Rate Tool:

Clicking this tool will adjust the rate for the polygon that is selected.



NOTE: If the rate does not exist, enter the new rate in Set Map Rate and a new color will automatically be assigned to it.

How to Create a Prescription Using a Management Zone.

If Management Zones (.shp files) have been imported, prescriptions can be created from the Management Zone. You will first need to setup your Management Zone to Rate table before you create your prescription.

Setting up the Management Zone to Rate Table:

NOTE: A Management Zone to Rate Table must be setup first.

1. Click on the "Setup" menu.
2. Click on the "Management Zone to Rate Table".
3. Select the Classification.

NOTE: The classification name refers to the grouping of values that have meaning with regards to each other. This classification name needs to match up to the Management Zone you would like to create a prescription from.

3. Select the Operation Type.
4. Select the Product Type that will be applied.
4. Select the unit of measure.

NOTE: (Optional) If the default rate is used, click Apply, the default rate will populate all the boxes for the selected crop, variety (product), and unit of measure parameters; overrides can then be made to individual management zones.

5. Enter in the rate for each unique description.

NOTE: If the description contains the rate the desired, click on Copy All and all the rates will populate in the Rate column.

7. Click OK.

Creating Prescriptions from a Management Zone

1. Open the Layers window.
2. Click Add.
3. Click on “New Application Plan” and click OK.

NOTE: If “New Application Plan” is not available, a field boundary must be created.

4. Give the prescription a unique Plan Name, choose a Product Category, Type, Product Name, Units and click OK.



NOTE: A warning may appear stating the selected variety the weight per 1000 seed is zero. Select Yes, the Setup Products window will appear, click on Seeding and define the Seeds per lb Kg.

5. Near the bottom of the New Application Plan window, place a check in the Create From Management Zone Map.
6. Choose the Management Zone Layer that is desired and click OK.

NOTE: Use the Edit Tool to change the rate of any polygon.

Saving the Prescription to the PC Card

IMPORTANT: Only the polygons/rates that are shown on the map will be applied.



1. In the Layers window highlight the application layer you wish to save to the pc card.
2. Click the Create Prescription Icon in the toolbar.
3. Enter in the Prescription Name.

NOTE: The Prescription Name will appear on the GreenStar Display.

5. Enter a default rate.

NOTE: The default rate is used in the event GPS is lost or the equipment travels outside of the field boundary.