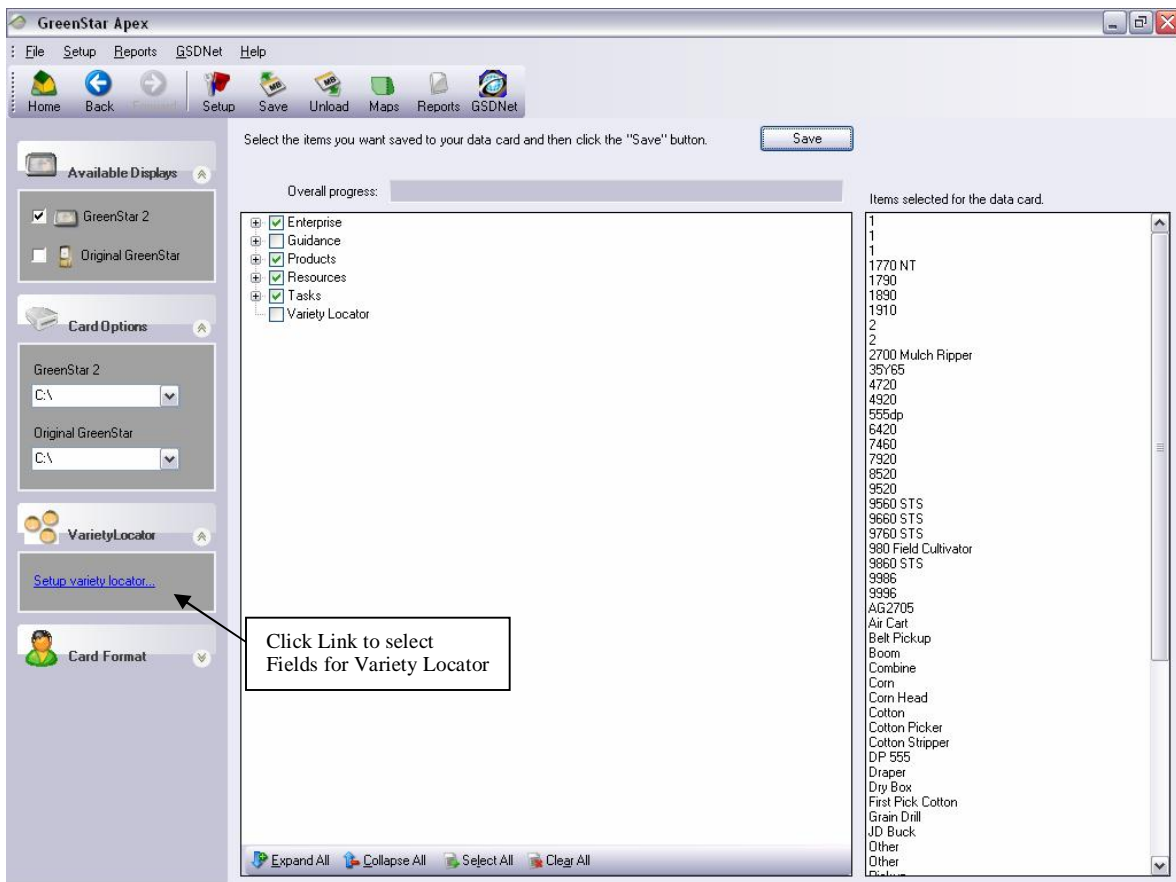


APEX/GS2 VARIETY LOCATOR TIPS

OCTOBER 2, 2006

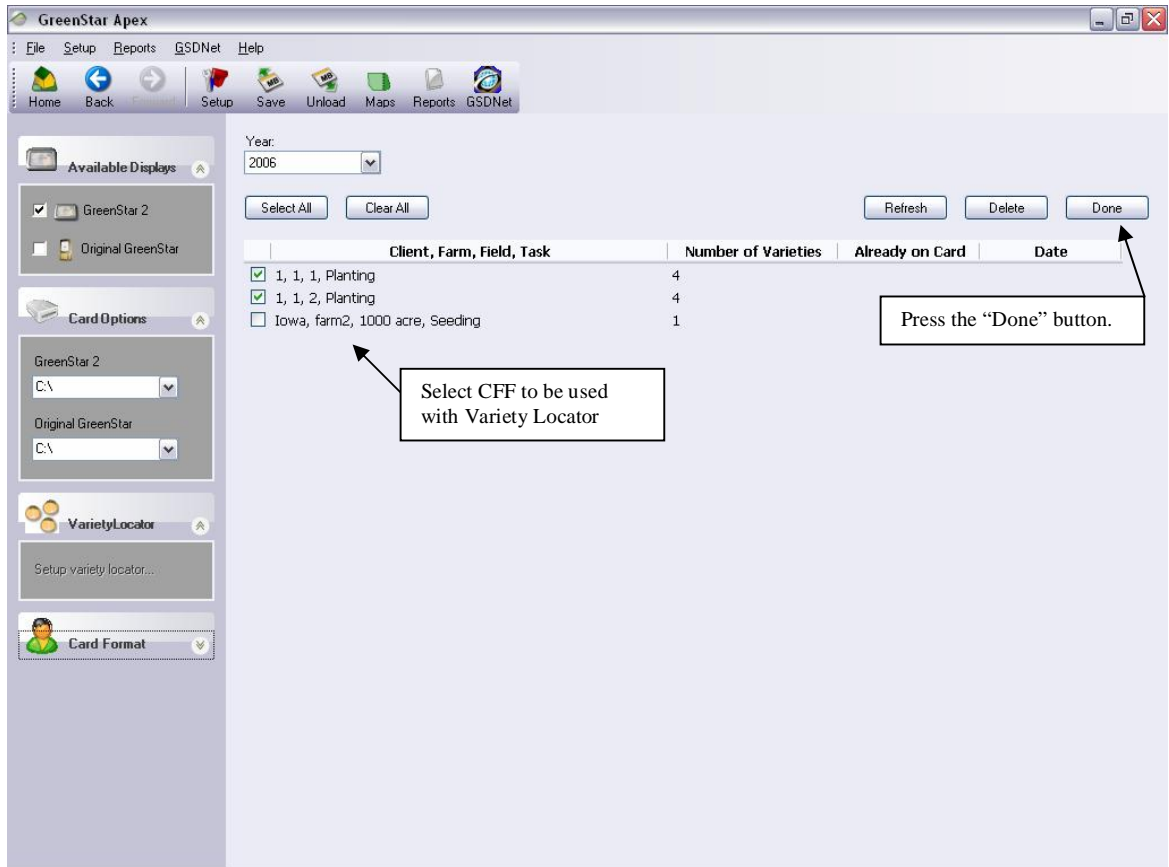
Apex Save to Card

1. Click the “Setup Variety Locator ...” link on the left side of the Save screen to select the Client(s), Farm(s), Field(s) for Variety Locator.



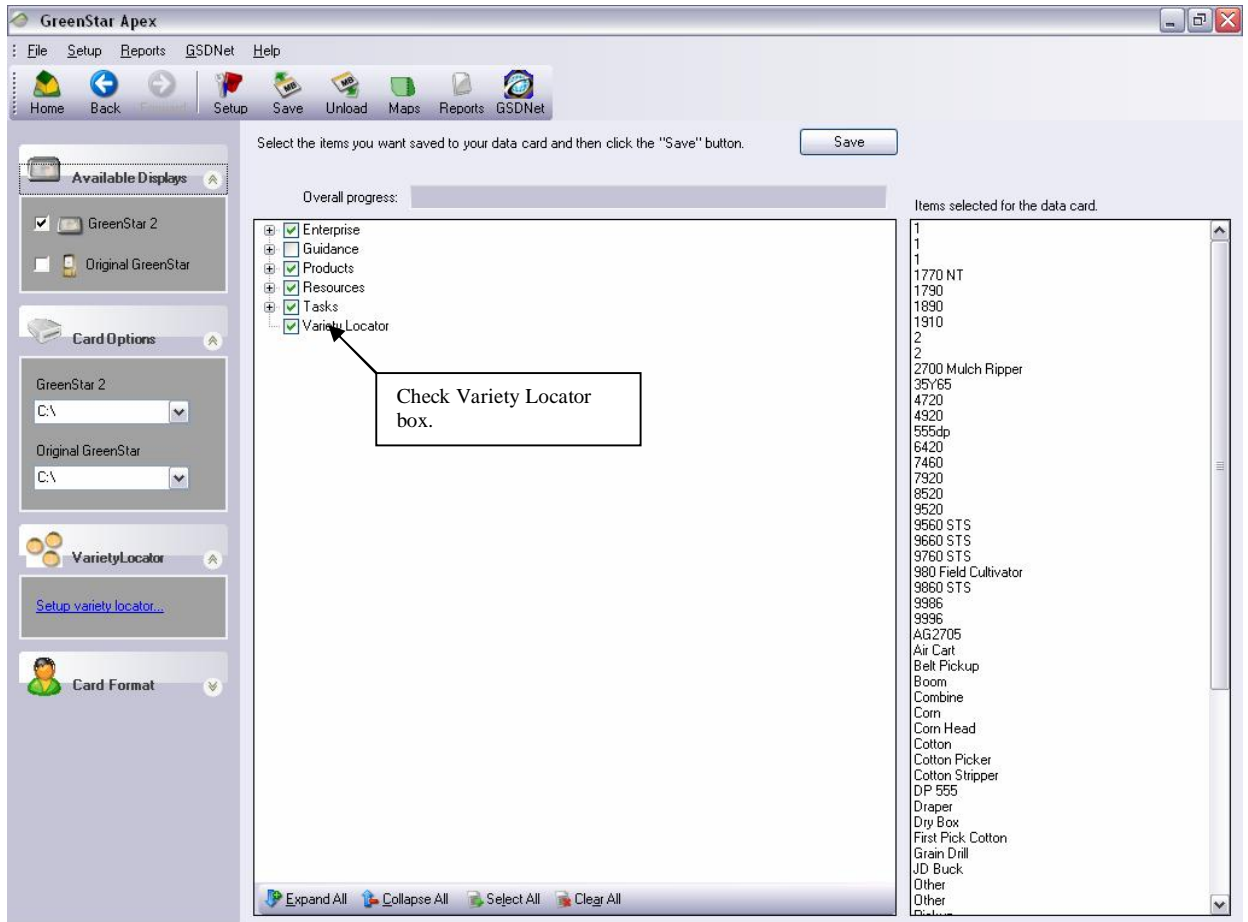
Apex 1: Save Screen

2. Select the Client(s), Farm(s), and Field(s) needed for Variety Locator and press the “Done” button. This will return the user to the screen above.



Apex 2: Variety Locator Setup

3. Check the Variety Locator box for Variety Locator files to be saved to the card. *Note: Variety Locator information is not added to the "Items selected for the data card" area on the right side of this screen.*



Apex 3: Save Screen with Variety Locator

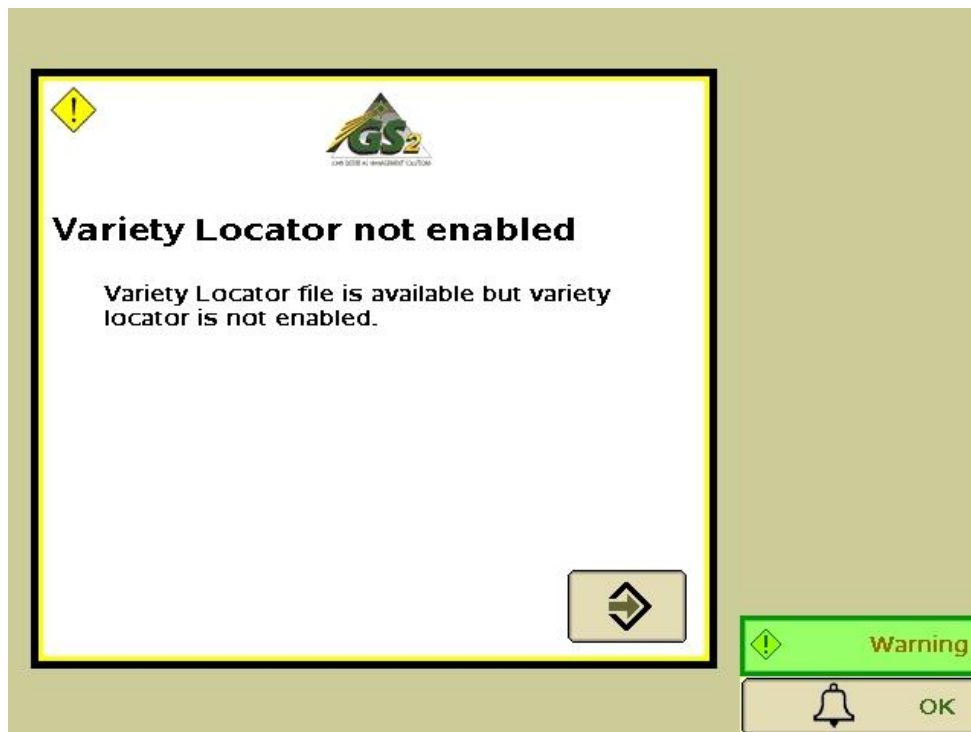
4. Save to card as usual. Note: If Variety Locator is selected correctly, the save process takes noticeably longer.

Apex Save to Card Tip

- § If multiple Variety Locator files are to be saved out to the card, it is recommended that the user save no more than 10 Variety Locator files to the card at a time. This can be done by selecting all your normal setup information on the Save screen (all clients, farms, fields, tasks, crops, machines, implements, etc.) that you expect to use during the season. On the "Setup variety locator" screen in Apex, select 10 fields that are to be used with Variety Locator. Once this is saved to the card, select the same setup information, but this time with 10 different fields (from the "Setup variety locator" screen). Repeat this until all the desired fields have Variety Locator files saved to the card.

GS2 Variety Locator Tips

1. If the selected Client, Farm, and Field have a Variety Locator file saved on the card, a pop-up screen stating "Variety Locator not enabled – Variety Locator file is available but variety locator is not enabled" will show on the display. This screen must be acknowledged before proceeding. If you would like to use Variety locator, check the Variety Locator box within "Change Harvest Settings."



GS2 1: Existing Variety Locator Warning Screen

2. On the Harvest tab – Change Harvest Settings page 1, if variety locator files are available for the selected Client, Farm, and Field the user should see the words: “Variety Locator file OK for this field” next to the Variety Locator check box.



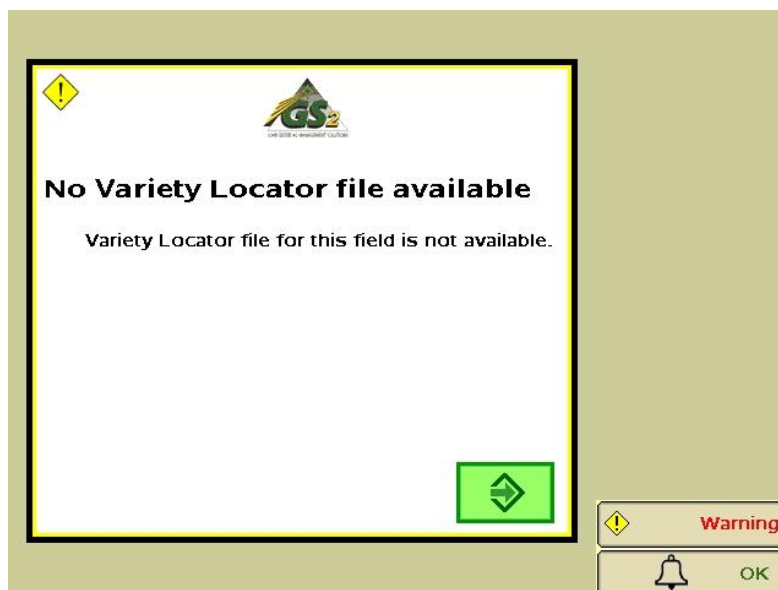
GS2 2: Change Harvest Settings with Variety Locator File

3. If #2 is seen and the Variety Locator box is checked, the Crop Type, Brand, and Variety combo boxes will be grayed out and cannot be changed as long as the Variety Locator box is checked. (See GS2 2: Change Harvest Settings with Variety Locator File).



GS2 3: Change Harvest Settings with No Variety Locator File

4. If no variety locator files are found for the selected CFF, the text “Variety Locator file is not found for this field” will be displayed after the Variety Locator check box.
5. If #2 is seen and the Variety Locator box is checked, the Crop Type, Brand, and Variety combo boxes will be grayed out and cannot be changed as long as the Variety Locator box is checked. (See GS2 2: Change Harvest Settings with Variety Locator File).
6. If #3 is seen and the Variety Locator box is checked, a warning pop-up will be displayed stating “No Variety Locator file available – Variety Locator file for this field is not available”. The warning must be acknowledged before proceeding. Once the warning is acknowledged, the box next to Variety Locator will remain checked but the combo boxes will NOT be grayed out and are editable.



GS2 4: No Variety Locator File Warning

GS2 Variety Locator Tips

1. If Variety Locator files are available and the Variety Locator check box is checked on the Harvest – Change Harvest Settings page, the GS2 will give an audible beep when the variety changes in the field. The GS2 will also update the variety name on any screen that displays the variety.
2. If the variety is not known for the given field and field location, (combine is out of the field, or in a waterway) the variety will change to the correct variety once the combine is moved into an area where a variety was recorded. Recording does not have to be on for variety changes to be detected.