

Platform Specific Information for:
Ag Chem 12X4 RoGator Sprayer
(1254/1264/1264C/1274/1274C)

Required Kits:

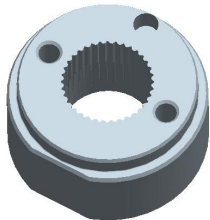
1. GreenStar Ready Universal Guidance Kit (PF90420)
2. AutoTrac Universal Steering Supplemental Kit – “D” (PF90437)

Note: Telescoping washer included in the primary ATU kit may require a small amount of filing to allow it to fit onto the steering shaft rod.

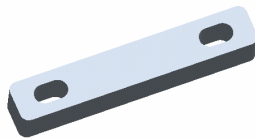
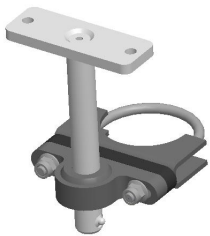
Note: In some cases, modification of the cab may be necessary to facilitate wire harness routing for the GPS receiver. If a modification is required, installers should fill any gaps between the harness and the cab to maintain cab seal and sound integrity. Sealant R46727 is recommended for filling these gaps

AutoTrac Universal Steering Kit Components Used:

Spline/Bushing: PF12167 from base ATU kit



Anti-Rotation Bracket: Spacer PF12335 from PF90437 Kit and Rod Assembly PF80904 from base ATU kit



Recommended Motor Mounting Directions: 6 o'clock

Operator Presence Detection: Operator Activity Monitor

Initial Recommended Sensitivity Settings

Steering Wheel Speed: 190

Acquire Sensitivity: 85

Line Sensitivity Heading: 180

Line Sensitivity Tracking: 100

Steering Asymmetry: 100

Tested Accuracy Results

Initial testing with settings above on flat ground provided information to calculate the system errors below.

Customers should experience errors at or below this level **50%** of the time.

Pass to Pass Errors (inch)	Straight Track	
	Low speed	High Speed
SF1	4.9	4.9
SF2	2.4	2.4
RTK	2.1	2.1

Customers should experience errors at or below this level **95%** of the time.

Pass to Pass Errors (inch)	Straight Track	
	Low speed	High Speed
SF1	14.4	14.4
SF2	7.3	7.4
RTK	6.2	6.3

***** These are calculated errors, depending on field conditions, vehicle set up, and implement set up you may observe accuracies different than listed above.*****

(Note: GreenStar components and AutoTrac software are also required to operate your AutoTrac Universal Steering Kit)