

Platform Specific Information for:
Ag Chem Sprayer
(1603/1803/1903)

Required Kits:

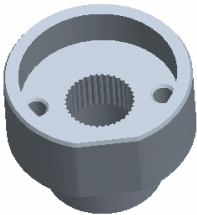
1. GreenStar Mobile Guidance Kit (PF90463)
2. AutoTrac Universal Steering Supplemental Kit – “T” (PF90466)
3. ATU Horn Bundle - PF90452 through Service Parts

Note: Since this platform has no cab roof bolts, dealer must fabricate brackets to hold the StarFire Receiver Universal Bar provided in GreenStar Ready Universal Guidance Kit. Go to the ATU Home Page on Stellar Support and access the document “StarFire Bracket Mounting Recommendations” for bracket fabrication guidelines.

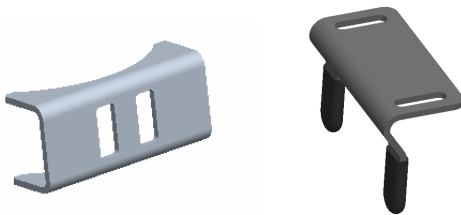
Note: In some cases, modification of the cab may be necessary to facilitate wire harness routing for the GPS receiver. If a modification is required, installers should fill any gaps between the harness and the cab to maintain cab seal and sound integrity. Sealant R46727 is recommended for filling these gaps

AutoTrac Universal Steering Kit Components Used:

Spline/Bushing: Hub (PF12364) from supplemental kit “T”



Anti-Rotation Bracket: Kit “T” plus bracket (PF80869) from base ATU kit.



Recommended Motor Mounting Directions: 6 o'clock

Operator Presence Detection: Operator Activity Monitor

Initial Recommended Sensitivity Settings

Steering Wheel Speed: 80

Acquire Sensitivity: 180

Line Sensitivity Heading: 200

Line Sensitivity Tracking: 170

Steering Asymmetry: 100

Tested Accuracy Results

Initial testing with settings above on flat ground provided information to calculate the system errors below.

Customers should experience errors at or below this level **50%** of the time.

| Pass to Pass Errors (inch) | Straight Track | |
|-------------------------------|----------------|------------|
| | Low speed | High Speed |
| SF1 | 5.0 | 5.4 |
| SF2 | 2.7 | 3.4 |
| RTK | 2.3 | 3.2 |

Customers should experience errors at or below this level **95%** of the time.

| Pass to Pass Errors (inch) | Straight Track | |
|-------------------------------|----------------|------------|
| | Low speed | High Speed |
| SF1 | 14.7 | 16.0 |
| SF2 | 7.9 | 10.2 |
| RTK | 6.9 | 9.4 |

***** These are calculated errors, depending on field conditions, vehicle set up, and implement set up you may observe accuracies different than listed above.*****

(Note: GreenStar components and AutoTrac software are also required to operate your AutoTrac Universal Steering Kit)