

**Platform Specific Information for:**  
**Buhler Genesis Row Crop**  
**(2145/2160/2180/2210)**

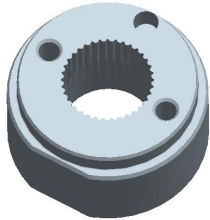
**Required Kits:**

1. GreenStar Ready Universal Guidance Kit (PF90420)
2. AutoTrac Universal Steering Supplemental Kit – “D” (PF90437)

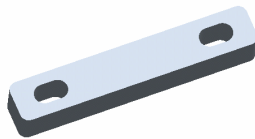
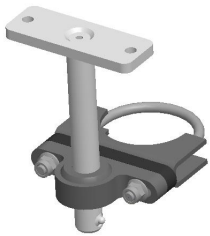
Note: Telescoping washer included in the primary ATU kit may require a small amount of filing to allow it to fit onto the steering shaft rod.

**AutoTrac Universal Steering Kit Components Used:**

**Spline/Bushing:** PF12167 from base ATU kit



**Anti-Rotation Bracket:** Spacer PF12335 from PF90437 Kit and Rod Assembly PF80904 from base ATU kit



**Recommended Motor Mounting Directions:** 6 o'clock

**Operator Presence Detection:** Operator Activity Monitor

**Initial Recommended Sensitivity Settings**

**Steering Wheel Speed:** 190

**Acquire Sensitivity:** 90

**Line Sensitivity Tracking:** 160

**Line Sensitivity Heading:** 90

**Steering Asymmetry:** 100

**Tested Accuracy Results**

Initial testing with settings above on flat ground provided information to calculate the system errors below.

Customers should experience errors at or below this level **50%** of the time.

Pass to Pass Errors (inch)	Straight Track	
	Low speed	High Speed
SF1	4.5	4.7
SF2	1.6	2.1
RTK	1.0	1.6

Customers should experience errors at or below this level **95%** of the time.

Pass to Pass Errors (inch)	Straight Track	
	Low speed	High Speed
SF1	13.3	13.8
SF2	4.8	6.1
RTK	2.8	4.7

**\*\*\* These are calculated errors, depending on field conditions, vehicle set up, and implement set up you may observe accuracies different than listed above.\*\*\***

*(Note: GreenStar components and AutoTrac software are also required to operate your AutoTrac Universal Steering Kit)*