

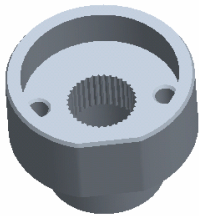
Platform Specific Information for:
CASE Steiger 91X0 & 92X0 4WD Tractors
(9110/9130/9150/9170/9180/9190)
(9210/9230/9250/9270/9280/9290)

Required Kits:

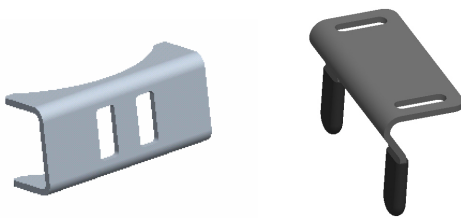
1. GreenStar Ready Universal Guidance Kit (PF90420)
2. AutoTrac Universal Steering Supplemental Kit – ‘T’ (PF90466)
3. ATU Horn Bundle – (PF90452)

AutoTrac Universal Steering Kit Components Used:

Spline/Bushing: PF12364



Anti-Rotation Bracket: Supplemental kit ‘T’ and bracket PF80869 from base ATU kit



Recommended Motor Mounting Directions: 6 o'clock

Operator Presence Detection: Operator Activity Monitor

Initial Recommended Sensitivity Settings

Steering Wheel Speed: 60

Acquire Sensitivity: 170

Line Sensitivity Tracking: 170

Line Sensitivity Heading: 100

Steering Asymmetry: 100

Tested Accuracy Results

Initial testing with settings above on flat ground provided information to calculate the system errors below.

Customers should experience errors at or below this level **50%** of the time.

Pass to Pass Errors (inch)	Straight Track	
	Low speed	High Speed
SF1	4.6	NA
SF2	1.8	NA
RTK	1.3	NA

Customers should experience errors at or below this level **95%** of the time.

Pass to Pass Errors (inch)	Straight Track	
	Low speed	High Speed
SF1	13.5	NA
SF2	5.4	NA
RTK	3.7	NA

***** These are calculated errors, depending on field conditions, vehicle set up, and implement set up you may observe accuracies different than listed above.*****

(Note: GreenStar components and AutoTrac software are also required to operate your AutoTrac Universal Steering Kit)