

**Platform Specific Information for:**  
**CAT C Track Tractors**  
**(65/70/75/85)**

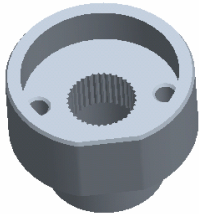
**Required Kits:**

1. GreenStar Ready Universal Guidance Kit (PF90420)
2. AutoTrac Universal Steering Supplemental Kit – “T” (PF90466)
3. ATU Horn Bundle – PF90452 through Service Parts

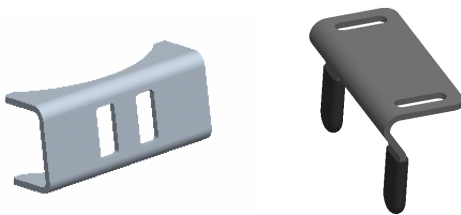
**Note:** Cab has two small cab roof bolt holes available to mount Universal StarFire GPS bar. Dealer will need to provide 2-19M8456 bolts and 4-24M7024 washers to mount.

**AutoTrac Universal Steering Kit Components Used:**

**Spline/Bushing:** PF12364 from supplemental kit “T”



**Anti-Rotation Bracket:** Kit “T” and bracket PF80869 from base ATU kit



**Recommended Motor Mounting Directions:** 6 o'clock

**Operator Presence Detection:** Operator Activity Monitor

**Initial Recommended Sensitivity Settings**

**Steering Wheel Speed:** 190  
**Acquire Sensitivity:** 180  
**Line Sensitivity Tracking:** 240  
**Line Sensitivity Heading:** 180  
**Steering Asymmetry:** 100

**Tested Accuracy Results**

Initial testing with settings above on flat ground provided information to calculate the system errors below.

Customers should experience errors at or below this level **50%** of the time.

Pass to Pass Errors (inch)	Straight Track	
	Low speed	High Speed
SF1	4.6	4.8
SF2	1.9	2.3
RTK	1.4	1.8

Customers should experience errors at or below this level **95%** of the time.

Pass to Pass Errors (inch)	Straight Track	
	Low speed	High Speed
SF1	13.6	14.0
SF2	5.7	6.7
RTK	4.1	5.4

**\*\*\* These are calculated errors, depending on field conditions, vehicle set up, and implement set up you may observe accuracies different than listed above.\*\*\***

*(Note: GreenStar components and AutoTrac software are also required to operate your AutoTrac Universal Steering Kit)*