

**Platform Specific Information for:**  
**CAT Challenger Track Tractor**  
**(35/45/55)**

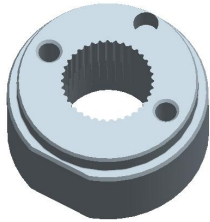
**Required Kits:**

1. GreenStar Ready Universal Guidance Kit (PF90420)
2. AutoTrac Universal Steering Supplemental Kit – “D” (PF90437)

Note: Telescoping washer included in the primary ATU kit may require a small amount of filing to allow it to fit onto the steering shaft rod.

**AutoTrac Universal Steering Kit Components Used:**

**Spline/Bushing:** PF12167 from base ATU kit



**Anti-Rotation Bracket:** Spacer PF12335 from PF90437 Kit and Rod Assembly PF80904 from base ATU kit



**Recommended Motor Mounting Directions:** 6 o'clock

**Operator Presence Detection:** Operator Activity Monitor

**Notes:** Some indicator lights in the lower portion of the dash below LCD screen are hidden, but they are accessible. Bolt on Universal Receiver Mount requires drilling two holes in bracket to accommodate narrower cab roof. Performance may be improved by selecting Row Crop Tractor as Vehicle Type

### **Initial Recommended Sensitivity Settings**

**Steering Wheel Speed:** 50

**Acquire Sensitivity:** 150

**Line Sensitivity Tracking:** 200

**Line Sensitivity Heading:** 150

**Steering Asymmetry:** 100

Note: For best performance on track tractors it is recommended that **StarFire Fore/Aft** be set to **0**.

### **Tested Accuracy Results**

Initial testing with settings above on flat ground provided information to calculate the system errors below.

Customers should experience errors at or below this level **50%** of the time.

Pass to Pass Errors (inch)	Straight Track	
	Low speed	High Speed
SF1	4.6	4.7
SF2	1.8	2.1
RTK	1.2	1.6

Customers should experience errors at or below this level **95%** of the time.

Pass to Pass Errors (inch)	Straight Track	
	Low speed	High Speed
SF1	13.4	13.8
SF2	5.3	6.1
RTK	3.6	4.7

**\*\*\* These are calculated errors, depending on field conditions, vehicle set up, and implement set up you may observe accuracies different than listed above.\*\*\***

*(Note: GreenStar components and AutoTrac software are also required to operate your AutoTrac Universal Steering Kit)*