

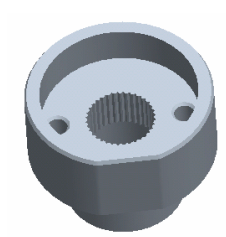
Platform Specific Information for:
CAT Challenger MT 6X5B Row Crop Tractor
(635B/645B/655B/665B)

Required Kits:

1. GreenStar Ready Universal Guidance Kit, Upgradeable (PF90420)
2. Spline/Bushing - PF12140 through Service Parts

AutoTrac Universal Steering Kit Components Used:

Spline/Bushing: PF12140



Anti-Rotation Bracket: PF80871 from base ATU kit



Recommended Motor Mounting Directions: 6 o'clock

Operator Presence Detection: Operator Activity Monitor

Note: Some arrow keys on steering column can not be seen when seated, but can still be reached.

Initial Recommended Sensitivity Settings

Steering Wheel Speed: 190

Acquire Sensitivity: 80

Line Sensitivity Tracking: 190

Line Sensitivity Heading: 110

Steering Asymmetry: 100

Tested Accuracy Results

Initial testing with settings above on flat ground provided information to calculate the system errors below.

Customers should experience errors at or below this level **50%** of the time.

| Pass to Pass Errors (inch) | Straight Track | |
|-------------------------------|----------------|------------|
| | Low speed | High Speed |
| SF1 | 4.5 | 4.6 |
| SF2 | 1.5 | 1.8 |
| RTK | 1.0 | 1.3 |

Customers should experience errors at or below this level **95%** of the time.

| Pass to Pass Errors (inch) | Straight Track | |
|-------------------------------|----------------|------------|
| | Low speed | High Speed |
| SF1 | 13.1 | 13.5 |
| SF2 | 4.3 | 5.4 |
| RTK | 1.9 | 3.8 |

***** These are calculated errors, depending on field conditions, vehicle set up, and implement set up you may observe accuracies different than listed above.*****

(Note: GreenStar components and AutoTrac software are also required to operate your AutoTrac Universal Steering Kit)