

Platform Specific Information for:
CAT Challenger MT 8X5 Track Tractors
(835/845/855/865)

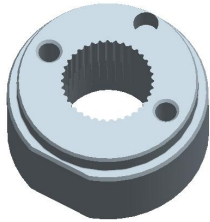
Required Kits:

1. GreenStar Ready Universal Guidance Kit (PF90420)
2. AutoTrac Universal Steering Supplemental Kit – “D” (PF90437)
3. ATU Horn Bundle – (PF90452)

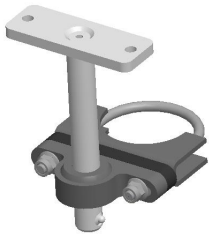
Note: Telescoping washer included in the primary ATU kit may require a small amount of filing to allow it to fit onto the steering shaft rod.

AutoTrac Universal Steering Kit Components Used:

Spline/Bushing: PF12167



Anti-Rotation Bracket: PF12335 from supplemental Kit “D” and Rod Assembly PF80904 from base ATU kit



Recommended Motor Mounting Directions: 6 o'clock

Operator Presence Detection: Operator Activity Monitor

Initial Recommended Sensitivity Settings

Steering Wheel Speed: 50

Acquire Sensitivity: 80

Line Sensitivity Tracking: 210

Line Sensitivity Heading: 140

Steering Asymmetry: 100

Note: For best performance on track tractors it is recommended that **StarFire Fore/Aft** be set to **0**.

Tested Accuracy Results

Initial testing with settings above on flat ground provided information to calculate the system errors below.

Customers should experience errors at or below this level **50%** of the time.

| Pass to Pass Errors (inch) | Straight Track | |
|-------------------------------|----------------|------------|
| | Low speed | High Speed |
| SF1 | 4.5 | 4.6 |
| SF2 | 1.4 | 1.8 |
| RTK | .5 | 1.2 |

Customers should experience errors at or below this level **95%** of the time.

| Pass to Pass Errors (inch) | Straight Track | |
|-------------------------------|----------------|------------|
| | Low speed | High Speed |
| SF1 | 13.1 | 13.4 |
| SF2 | 4.2 | 5.2 |
| RTK | 1.5 | 3.5 |

***** These are calculated errors, depending on field conditions, vehicle set up, and implement set up you may observe accuracies different than listed above.*****

(Note: GreenStar components and AutoTrac software are also required to operate your AutoTrac Universal Steering Kit)