

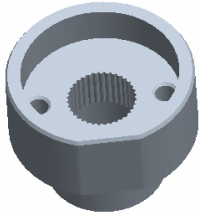
**Platform Specific Information for:**  
**CAT E Track Tractors**  
**(65/75/85/95)**

**Required Kits:**

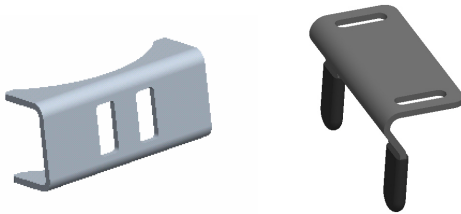
1. GreenStar Ready Universal Guidance Kit (PF90420)
2. AutoTrac Universal Steering Supplemental Kit – “T” (PF90466)
3. ATU Horn Bundle – (PF90452)

**AutoTrac Universal Steering Kit Components Used:**

**Spline/Bushing:** PF12364 from supplemental kit “T”



**Anti-Rotation Bracket:** Bracket PF12372 from supplemental kit “T” and bracket PF80869 from base ATU kit



**Recommended Motor Mounting Directions:** 6 o'clock

**Operator Presence Detection:** Operator Activity Monitor

### **Initial Recommended Sensitivity Settings**

**Steering Wheel Speed:** 150

**Acquire Sensitivity:** 155

**Line Sensitivity Tracking:** 250

**Line Sensitivity Heading:** 180

**Steering Asymmetry:** 100

**Steer Play:** 130 (value is dependent on vehicle steering system components)

Note: For best performance on track tractors it is recommended that **StarFire Fore/Aft** be set to **0**.

### **Tested Accuracy Results**

Initial testing with settings above on flat ground provided information to calculate the system errors below.

Customers should experience errors at or below this level **50%** of the time.

Pass to Pass Errors (inch)	Straight Track	
	Low speed	High Speed
SF1	4.6	NA
SF2	1.8	NA
RTK	1.3	NA

Customers should experience errors at or below this level **95%** of the time.

Pass to Pass Errors (inch)	Straight Track	
	Low speed	High Speed
SF1	13.5	NA
SF2	5.3	NA
RTK	3.7	NA

**\*\*\* These are calculated errors, depending on field conditions, vehicle set up, and implement set up you may observe accuracies different than listed above.\*\*\***

*(Note: GreenStar components and AutoTrac software are also required to operate your AutoTrac Universal Steering Kit)*