

Platform Specific Information for:
Case AFX Combine
(8010)

Required Kits:

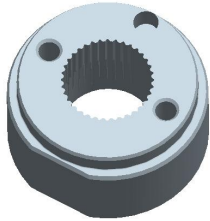
1. GreenStar Ready Universal Guidance Kit (PF90420)
2. AutoTrac Universal Steering Supplemental Kit – “D” (PF90437)

Note: Since this platform has no cab roof bolts, dealer must fabricate brackets to hold the StarFire Receiver Universal Bar provided in GreenStar Ready Universal Guidance Kit. Go to the ATU Home Page on Stellar Support and access the document “StarFire Bracket Mounting Recommendations” for bracket fabrication guidelines.

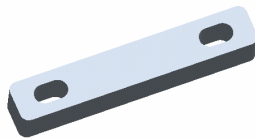
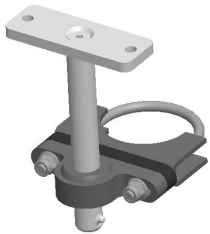
Note: Steering column plastic cowling requires modification for anti-rotation bracket to fit.

AutoTrac Universal Steering Kit Components Used:

Spline/Bushing: PF12167 from base ATU kit



Anti-Rotation Bracket: Spacer PF12335 from PF90437 Kit and Rod Assembly PF80904 from base ATU kit



Recommended Motor Mounting Directions: 12 o'clock

Operator Presence Detection: Operator Activity Monitor

Initial Recommended Sensitivity Settings

Steering Wheel Speed: 190

Acquire Sensitivity: 90

Line Sensitivity Tracking: 260

Line Sensitivity Heading: 90

Steering Asymmetry: 100

Tested Accuracy Results

Initial testing with settings above on flat ground provided information to calculate the system errors below.

Customers should experience errors at or below this level **50%** of the time.

Pass to Pass Errors (inch)	Straight Track	
	Low speed	High Speed
SF1	4.5	4.6
SF2	1.7	1.9
RTK	1.1	1.4

Customers should experience errors at or below this level **95%** of the time.

Pass to Pass Errors (inch)	Straight Track	
	Low speed	High Speed
SF1	13.3	13.6
SF2	5.0	5.6
RTK	3.2	4.0

***** These are calculated errors, depending on field conditions, vehicle set up, and implement set up you may observe accuracies different than listed above.*****

(Note: GreenStar components and AutoTrac software are also required to operate your AutoTrac Universal Steering Kit)