

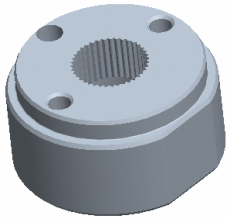
**Platform Specific Information for:**  
**Case MXM Row Crop Tractors**  
**(120/130/140/155/190)**

**Required Kits:**

1. GreenStar Ready Universal Guidance Kit (PF90420)
2. Spline/Bushing (PF12380 - Order through parts)

**AutoTrac Universal Steering Kit Components Used:**

**Spline/Bushing:** PF12380



**Anti-Rotation Bracket:** PF80869 from Base ATU Kit



**Recommended Motor Mounting Directions:** 6 o'clock

**Operator Presence Detection:** Operator Activity Monitor

**Initial Recommended Sensitivity Settings**

**Steering Wheel Speed:** 190

**Acquire Sensitivity:** 80

**Line Sensitivity Tracking:** 190

**Line Sensitivity Heading:** 100

**Disengagement Force:** High

**Tested Accuracy Results**

Initial testing with settings above on flat ground provided information to calculate the system errors below.

Customers should experience errors at or below this level **50%** of the time.

| Pass to Pass<br>Errors (inch) | Straight Track |            |
|-------------------------------|----------------|------------|
|                               | Low speed      | High Speed |
| SF1                           | 4.5            | 4.6        |
| SF2                           | 1.5            | 2.0        |
| RTK                           | 1.0            | 1.4        |

Customers should experience errors at or below this level **95%** of the time.

| Pass to Pass<br>Errors (inch) | Straight Track |            |
|-------------------------------|----------------|------------|
|                               | Low speed      | High Speed |
| SF1                           | 13.1           | 13.6       |
| SF2                           | 4.4            | 5.7        |
| RTK                           | 2.2            | 4.1        |

**\*\*\* These are calculated errors, depending on field conditions, vehicle set up, and implement set up you may observe accuracies different than listed above.\*\*\***

*(Note: GreenStar components and AutoTrac software are also required to operate your AutoTrac Universal Steering Kit)*