

Platform Specific Information for:
Case MX 1XX Row Crop Tractors
(100/110/120/135/150/170)

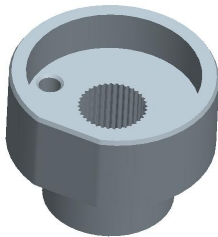
Required Kits:

1. GreenStar Ready Universal Guidance Kit (PF90420)
2. AutoTrac Universal Steering Supplemental Kit – “A” (PF90411)

Note: Some models do not have cab roof bolts, dealer must fabricate brackets to hold the StarFire Receiver Universal Bar provided in GreenStar Ready Universal Guidance Kit. Go to the ATU Home Page on Stellar Support and access the document “StarFire Bracket Mounting Recommendations” for bracket fabrication guidelines.

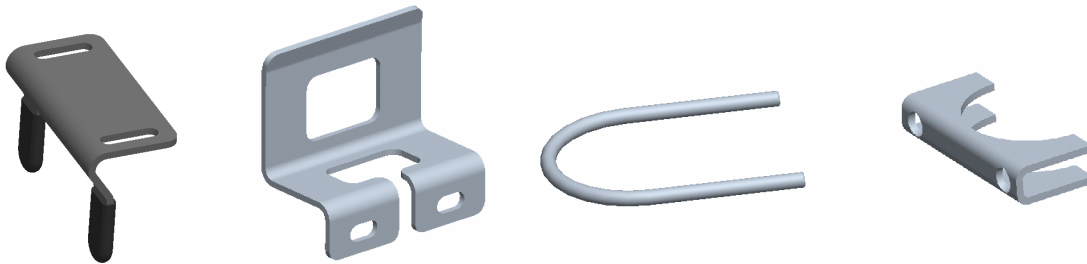
AutoTrac Universal Steering Kit Components Used:

Spline/Bushing: PF12140



AutoTrac Universal Steering Kit Components Used:

Anti-Rotation Bracket: Bracket Kit from supplemental Kit “G” with bracket PF80869 from base ATU kit



Recommended Motor Mounting Directions: 6 o'clock

Operator Presence Detection: Operator Activity Monitor

Initial Recommended Sensitivity Settings

Steering Wheel Speed: 190
Acquire Sensitivity: 80
Line Sensitivity Tracking: 180
Line Sensitivity Heading: 80
Steering Asymmetry: 100

Tested Accuracy Results

Initial testing with settings above on flat ground provided information to calculate the system errors below.

Customers should experience errors at or below this level **50%** of the time.

| Pass to Pass Errors (inch) | Straight Track | |
|-------------------------------|----------------|------------|
| | Low speed | High Speed |
| SF1 | 4.7 | 5.0 |
| SF2 | 2.0 | 2.7 |
| RTK | 1.4 | 2.3 |

Customers should experience errors at or below this level **95%** of the time.

| Pass to Pass Errors (inch) | Straight Track | |
|-------------------------------|----------------|------------|
| | Low speed | High Speed |
| SF1 | 13.7 | 14.7 |
| SF2 | 5.8 | 7.9 |
| RTK | 4.3 | 6.8 |

***** These are calculated errors, depending on field conditions, vehicle set up, and implement set up you may observe accuracies different than listed above.*****

(Note: GreenStar components and AutoTrac software are also required to operate your AutoTrac Universal Steering Kit)