

**Platform Specific Information for:**  
**Case SPX Sprayers**  
**(3150/3185/3310)**

**Required Kits:**

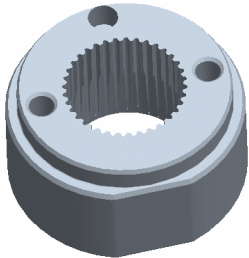
1. **GreenStar Ready Universal Guidance Kit (PF90420)**
2. **AutoTrac Universal Steering Supplemental Kit – “H” (PF90455)**
3. **Spra-Coupe Spline – PF12339 (Order through Parts)**
4. **ATU Horn Kit (PF90452)**

Note: Some models do not have cab roof bolts, dealer must fabricate brackets to hold the StarFire Receiver Universal Bar provided in GreenStar Ready Universal Guidance Kit. Go to the ATU Home Page on Stellar Support and access the document “StarFire Bracket Mounting Recommendations” for bracket fabrication guidelines.

Note: In some cases, modification of the cab may be necessary to facilitate wire harness routing for the GPS receiver. If a modification is required, installers should fill any gaps between the harness and the cab to maintain cab seal and sound integrity. Sealant R46727 is recommended for filling these gaps

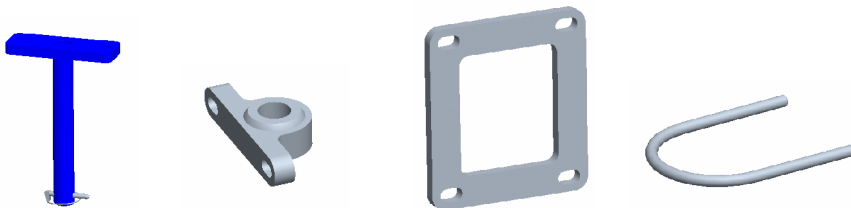
**AutoTrac Universal Steering Kit Components Used:**

**Spline/Bushing:** PF12339



**AutoTrac Universal Steering Kit Components Used:**

**Anti-Rotation Bracket:** Needs Bracket from Supplemental Kit "H" PF90455 along with rod assembly PF 80869 from ATU Base Kit.



**Recommended Motor Mounting Directions:** 6 o'clock or 12 o'clock

**Operator Presence Detection:** Operator Activity Monitor

**Initial Recommended Sensitivity Settings**

**Steering Wheel Speed:** 190

**Acquire Sensitivity:** 50

**Line Sensitivity Tracking:** 180

**Line Sensitivity Heading:** 80

**Steering Asymmetry:** 100

**Tested Accuracy Results**

Initial testing with settings above on flat ground provided information to calculate the system errors below.

Customers should experience errors at or below this level **50%** of the time.

Pass to Pass Errors (inch)	Straight Track	
	Low speed	High Speed
SF1	4.7	NA
SF2	2.0	NA
RTK	1.5	NA

Customers should experience errors at or below this level **95%** of the time.

Pass to Pass Errors (inch)	Straight Track	
	Low speed	High Speed
SF1	13.7	NA
SF2	5.9	NA
RTK	4.5	NA

**\*\*\* These are calculated errors, depending on field conditions, vehicle set up, and implement set up you may observe accuracies different than listed above.\*\*\***

*(Note: GreenStar components and AutoTrac software are also required to operate your AutoTrac Universal Steering Kit)*