

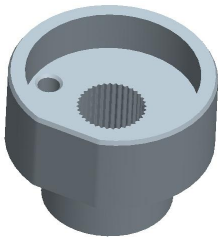
Platform Specific Information for:
Case STX 4WD Tractors
(275/325/375/425/450/500)

Required Kits:

1. GreenStar Ready Universal Guidance Kit (PF90420 or PF90254)
2. AutoTrac Universal Steering Supplemental Kit – “A” (PF90411)

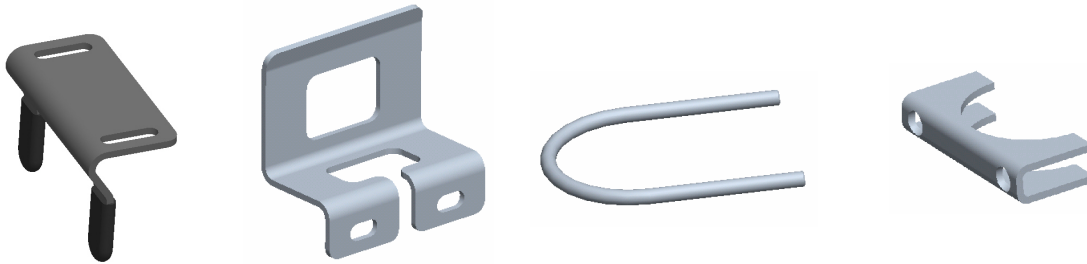
AutoTrac Universal Steering Kit Components Used:

Spline/Bushing: PF12140 from Kit “A”



AutoTrac Universal Steering Kit Components Used:

Anti-Rotation Bracket: Bracket Kit from supplemental Kit “A” with bracket PF80869 from base ATU kit



Recommended Motor Mounting Directions: 3 o'clock

Operator Presence Detection: Operator Activity Monitor

Initial Recommended Sensitivity Settings

Steering Wheel Speed: 100

Acquire Sensitivity: 90

Line Sensitivity Tracking: 100

Line Sensitivity Heading: 160

Steering Asymmetry: 100

Tested Accuracy Results

Initial testing with settings above on flat ground provided information to calculate system errors below.

Customers should experience errors at or below this level **50%** of the time.

Pass to Pass Errors (inch)	Straight Track	
	Low speed	High Speed
SF1	4.6	5.0
SF2	1.7	2.7
RTK	1.1	2.3

Customers should experience errors at or below this level **95%** of the time.

Pass to Pass Errors (inch)	Straight Track	
	Low speed	High Speed
SF1	13.4	14.6
SF2	5.0	7.7
RTK	3.2	6.7

***** These are calculated errors, depending on field conditions, vehicle set up, and implement set up you may observe accuracies different than listed above.*****

(Note: GreenStar components and AutoTrac software are also required to operate your AutoTrac Universal Steering Kit)