

Platform Specific Information for:
Haggie STS-1X Sprayers
(STS-10/STS-12/STS-16)

Required Kits:

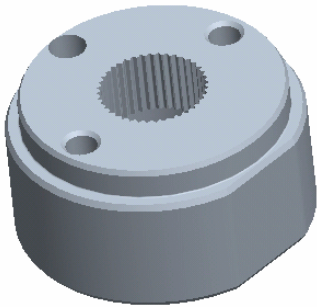
1. Needs GreenStar Ready Kit (PF90420)
2. Needs Spline PF12380 (order through parts)

Note: In some cases, modification of the cab may be necessary to facilitate wire harness routing for the GPS receiver. If a modification is required, installers should fill any gaps between the harness and the cab to maintain cab seal and sound integrity. Sealant R46727 is recommended for filling these gaps

Note: Some models do not have cab roof bolts, dealer must fabricate brackets to hold the StarFire Receiver Universal Bar provided in GreenStar Ready Universal Guidance Kit. Go to the ATU Home Page on Stellar Support and access the document “StarFire Bracket Mounting Recommendations” for bracket fabrication guidelines.

AutoTrac Universal Steering Kit Components Used:

Spline/Bushing: PF12380



Anti-Rotation Bracket: PF80869 from base ATU kit



Recommended Motor Mounting Directions: 6 o'clock

Operator Presence Detection: Operator Activity Monitor

Initial Recommended Sensitivity Settings

Steering Wheel Speed: 190

Acquire Sensitivity: 75

Line Sensitivity Tracking: 180

Line Sensitivity Heading: 100

Steering Asymmetry: 100

Tested Accuracy Results

Initial testing with settings above on flat ground provided information to calculate system errors below.

Customers should experience errors at or below this level **50%** of the time.

Pass to Pass Errors (inch)	Straight Track	
	Low speed	High Speed
SF1	5.0	5.4
SF2	2.8	3.4
RTK	2.4	3.1

Customers should experience errors at or below this level **95%** of the time.

Pass to Pass Errors (inch)	Straight Track	
	Low speed	High Speed
SF1	14.8	15.9
SF2	8.2	10.0
RTK	7.2	9.2

***** These are calculated errors, depending on field conditions, vehicle set up, and implement set up you may observe accuracies different than listed above.*****

(Note: GreenStar components and AutoTrac software are also required to operate your AutoTrac Universal Steering Kit)