

Platform Specific Information for: **John Deere 4720 Sprayer**

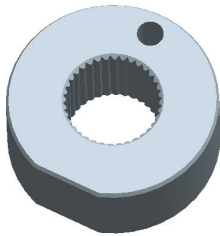
Required Kits:

1. AutoTrac Universal Steering Supplement Kit – “B” (PF90518)

Note: To prevent potential downtime, check to see that a 10A fuse is installed in fuse location F22.

AutoTrac Universal Steering Kit Components Used:

Spline/Bushing: PF12168 from Base ATU Kit



Anti-Rotation Bracket: PF80869 from Base ATU Kit



Recommended Motor Mounting Directions: 6 o'clock

Operator Presence Detection: Operator Activity Monitor

Other Recommendations: Use thread locker JDT281 for the screws holding the turn signal console together.

ATU Harness 2/4 Pin Connection Location:

GreenStar Harness 2/4 pin connectors



Initial Recommended Sensitivity Settings

Steering Wheel Speed: 180

Acquire Sensitivity: 150

Line Sensitivity Tracking: 190

Line Sensitivity Heading: 150

Steering Asymmetry: 100

Tested Accuracy Results

Initial testing with settings above on flat ground provided information to calculate system errors below.

Customers should experience errors at or below this level **50%** of the time.

Pass to Pass Errors (inch)	Straight Track	
	Low speed	High Speed
SF1	4.6	4.8
SF2	1.7	2.2
RTK	1.1	1.8

Customers should experience errors at or below this level **95%** of the time.

Pass to Pass Errors (inch)	Straight Track	
	Low speed	High Speed
SF1	13.4	14.0
SF2	5.1	6.6
RTK	3.3	5.3

***** These are calculated errors, depending on field conditions, vehicle set up, and implement set up you may observe accuracies different than listed above.*****

(Note: GreenStar components and AutoTrac software are also required to operate your AutoTrac Universal Steering Kit)