

## **Platform Specific Information for:** **John Deere 4920 Sprayer**

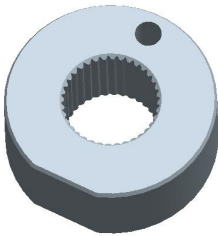
### **Required Kits:**

1. AutoTrac Universal Steering Supplemental Kit – “B” (PF90518)

Note: To prevent potential downtime, check to see that a 10A fuse is installed in fuse location F12.

### **AutoTrac Universal Steering Kit Components Used:**

**Spline/Bushing:** PF12168 from Base ATU Kit



**Anti-Rotation Bracket:** PF80869 from Base ATU Kit



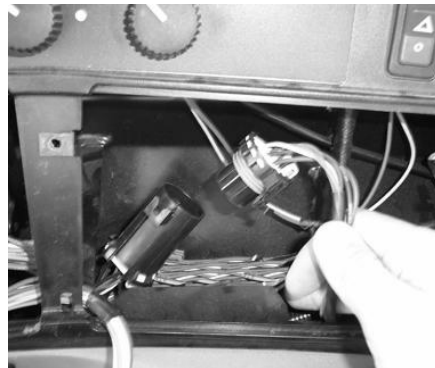
**Recommended Motor Mounting Directions:** 6 o'clock

**Operator Presence Detection:** Operator Activity Monitor

**Other Recommendations:** Use thread locker JDT281 for the screws holding the turn signal console together.

### **ATU Harness 2/4 Pin Connection Location:**

GreenStar Harness 6 pin connector



**Initial Recommended Sensitivity Settings**

**Steering Wheel Speed:** 190

**Acquire Sensitivity:** 160

**Line Sensitivity Tracking:** 160

**Line Sensitivity Heading:** 130

**Steering Asymmetry:** 100

**Tested Accuracy Results**

Initial testing with settings above on flat ground provided information to calculate system errors below.

Customers should experience errors at or below this level **50%** of the time.

| Pass to Pass<br>Errors (inch) | Straight Track |            |
|-------------------------------|----------------|------------|
|                               | Low speed      | High Speed |
| SF1                           | 4.5            | 4.7        |
| SF2                           | 1.6            | 2.1        |
| RTK                           | 1.1            | 1.6        |

Customers should experience errors at or below this level **95%** of the time.

| Pass to Pass<br>Errors (inch) | Straight Track |            |
|-------------------------------|----------------|------------|
|                               | Low speed      | High Speed |
| SF1                           | 13.3           | 13.9       |
| SF2                           | 4.9            | 6.3        |
| RTK                           | 3.1            | 4.9        |

**\*\*\* These are calculated errors, depending on field conditions, vehicle set up, and implement set up you may observe accuracies different than listed above.\*\*\***

*(Note: GreenStar components and AutoTrac software are also required to operate your AutoTrac Universal Steering Kit)*