

**Platform Specific Information for:**  
**John Deere 4X60 Row Crop Tractors**  
**(4560/4760/4960)**

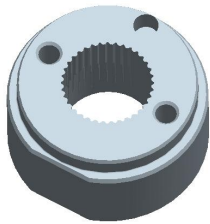
**Required Kits:**

1. GreenStar Ready Universal Guidance Kit (PF90420)

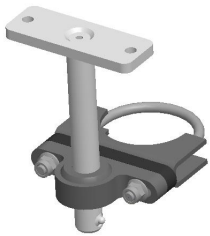
**Note:** May need to order PF81090 from Service Parts to get the appropriate display clamp-on bracket.

**AutoTrac Universal Steering Kit Components Used:**

**Spline/Bushing:** PF12167 from base ATU kit



**Anti-Rotation Bracket:** Assembly PF80904 from base ATU kit



**Recommended Motor Mounting Directions:** 12 o'clock or 6 o'clock

**Operator Presence Detection:** Operator Activity Monitor

**Initial Recommended Sensitivity Settings**

**Steering Wheel Speed:** 200

**Acquire Sensitivity:** 90

**Line Sensitivity Tracking:** 180

**Line Sensitivity Heading:** 90

**Steering Asymmetry:** 100

### **Tested Accuracy Results**

Initial testing with settings above on flat ground provided information to calculate the system errors below.

Customers should experience errors at or below this level **50%** of the time.

Pass to Pass Errors (inch)	Straight Track	
	Low speed	High Speed
SF1	4.5	4.5
SF2	1.6	1.5
RTK	1.0	0.7

Customers should experience errors at or below this level **95%** of the time.

Pass to Pass Errors (inch)	Straight Track	
	Low speed	High Speed
SF1	13.3	13.1
SF2	4.8	4.5
RTK	2.8	2.2

**\*\*\* These are calculated errors, depending on field conditions, vehicle set up, and implement set up you may observe accuracies different than listed above.\*\*\***

*(Note: GreenStar components and AutoTrac software are also required to operate your AutoTrac Universal Steering Kit)*