

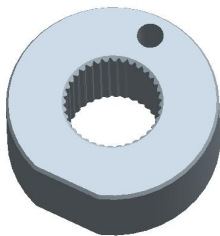
Platform Specific Information for:
John Deere 8X20 Row Crop Tractors - Wheels
(8120/8220/8320/8420/8520)

Required Kits:

1. Needs GreenStar Kit (PF90252) for tractors < PIN 010000

AutoTrac Universal Steering Kit Components Used:

Spline/Bushing: PF12168 from base ATU kit



Anti-Rotation Bracket: PF80869 from base ATU kit

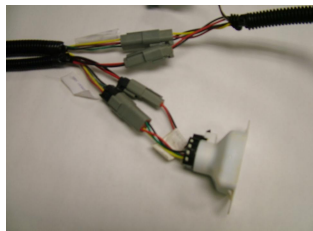


Recommended Motor Mounting Directions: 6 o'clock

Operator Presence Detection: Seat Switch Harness PF80865 from base ATU kit (use black connectors)

ATU Harness 2/4 Pin Connection Location:

GreenStar Harness 2/4 pin connectors
For tractor below 010000



or

GreenStar Harness in side Panel
GreenStar Ready



Other Recommendations: Use thread locker JDT281 for the screws holding the turn signal console together.

Initial Recommended Sensitivity Settings

Steering Wheel Speed: 200

Acquire Sensitivity: 90

Line Sensitivity Tracking: 180

Line Sensitivity Heading: 90

Steering Asymmetry: 100

Tested Accuracy Results

Initial testing with settings above on flat ground provided information to calculate system errors below.

Customers should experience errors at or below this level **50%** of the time.

Pass to Pass Errors (inch)	Straight Track	
	Low speed	High Speed
SF1	4.5	4.5
SF2	1.6	1.6
RTK	1.0	1.0

Customers should experience errors at or below this level **95%** of the time.

Pass to Pass Errors (inch)	Straight Track	
	Low speed	High Speed
SF1	13.3	13.3
SF2	4.9	4.8
RTK	3.0	2.9

***** These are calculated errors, depending on field conditions, vehicle set up, and implement set up you may observe accuracies different than listed above.*****

(Note: GreenStar components and AutoTrac software are also required to operate your AutoTrac Universal Steering Kit)