

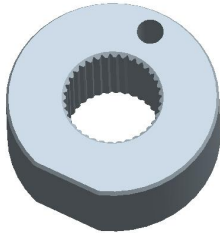
Platform Specific Information for:
John Deere 9X20 4WD Articulated Tractors
(9120/9220/9320/9420/9520/9620))

Required Kits:

1. GreenStar Ready Kit (PF90253) for Tractors with SN below 010000

AutoTrac Universal Steering Kit Components Used:

Spline/Bushing: PF12168 from base ATU kit



Anti-Rotation Bracket: PF80869 from base ATU kit

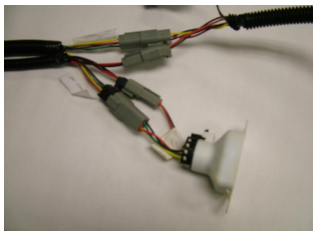


Recommended Motor Mounting Directions: 6 o'clock

Operator Presence Detection: Seat switch harness PF80865 from base ATU kit (uses black connectors)

ATU Harness 2/4 Pin Connection Location:

GreenStar Harness 2/4 pin connectors
For tractor below 010000



or

GreenStar Harness in side Panel
GreenStar Ready



Other Recommendations: Use thread locker JDT281 for the screws holding the turn signal console together.

Initial Recommended Sensitivity Settings

Steering Wheel Speed: 100

Acquire Sensitivity: 100

Line Sensitivity Tracking: 180

Line Sensitivity Heading: 100

Steering Asymmetry: 100

Tested Accuracy Results

Initial testing with settings above on flat ground provided information to calculate system errors below.

Customers should experience errors at or below this level **50%** of the time.

| Pass to Pass Errors (inch) | Straight Track | |
|----------------------------|----------------|------------|
| | Low speed | High Speed |
| SF1 | 4.5 | 4.6 |
| SF2 | 1.7 | 2.0 |
| RTK | 1.1 | 1.5 |

Customers should experience errors at or below this level **95%** of the time.

| Pass to Pass Errors (inch) | Straight Track | |
|----------------------------|----------------|------------|
| | Low speed | High Speed |
| SF1 | 13.4 | 13.7 |
| SF2 | 5.1 | 5.9 |
| RTK | 3.3 | 4.4 |

***** These are calculated errors, depending on field conditions, vehicle set up, and implement set up you may observe accuracies different than listed above.*****

(Note: GreenStar components and AutoTrac software are also required to operate your AutoTrac Universal Steering Kit)