

ahooPlatform Specific Information for:

John Deere 9X60 Combines

(9560/9660/9660CTS/9560STS/9660STS/9760STS/9860STS/9860Prem)

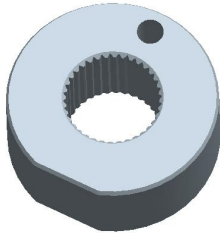
Required Kits:

1. AutoTrac Universal Steering Supplemental Kit “L” (PF90468)
2. If combine does not have a StarFire Mounting Bracket on the front of the cab, order StarFire Receiver Mounting Bracket (AH211594) Through Service Parts
3. If combine does not have a GreenStar Display Bracket, order GreenStar Display Bracket (PF80209) through Service Parts for the Original GreenStar Display or bracket kit (AH220633) for the GreenStar 2 Display.

Note: AutoTrac requires Terrain Compensation (TCM or iTC receiver)

AutoTrac Universal Steering Kit Components Used:

Spline/Bushing: Straight (PF12168)



Anti-Rotation Bracket: PF90510 included Supplemental Kit “L”



Recommended Motor Mounting Directions: 6 o'clock

Operator Presence Detection: Operator Activity Monitor

Initial Recommended Sensitivity Settings

Steering Wheel Speed: 190

Acquire Sensitivity: 120

Line Sensitivity Tracking: 200

Line Sensitivity Heading: 100

Steering Asymmetry: 100

Tested Accuracy Results

Initial testing with settings above on flat ground provided information to calculate the system errors below.

Customers should experience errors at or below this level **50%** of the time.

Pass to Pass Errors (inch)	Straight Track	
	Low speed	High Speed
SF1	4.5	4.6
SF2	1.5	1.7
RTK	1.0	1.1

Customers should experience errors at or below this level **95%** of the time.

Pass to Pass Errors (inch)	Straight Track	
	Low speed	High Speed
SF1	13.1	13.4
SF2	4.4	5.1
RTK	2.2	3.3

***** These are calculated errors, depending on field conditions, vehicle set up, and implement set up you may observe accuracies different than listed above.*****

(Note: GreenStar components and AutoTrac software are also required to operate your AutoTrac Universal Steering Kit)