

Platform Specific Information for:
John Deere Late 9X50 Combines

(9450 SN >690100)

(9550 SN >690200)

(9550SH SN >690700)

(9650 SN >690300)

(9650CTS SN >690400)

(9650STS SN >690500)

(9750STS SN >690600)

Required Kits:

1. AutoTrac Universal Steering Supplemental Kit “L” (PF90468)
2. If combine does not have a StarFire Mounting Bracket on the front of the cab, order StarFire Receiver Mounting Bracket (AH211594) Through Service Parts
3. If combine does not have a GreenStar Display Bracket, order GreenStar Display Bracket (PF80209) through Service Parts for the Original GreenStar Display or bracket kit (AH220633) for the GreenStar 2 Display.

Required Software Upgrades for Combines with Side Mount Moisture Sensor
(not required for Grain Tank Mounted Moisture Sensors)

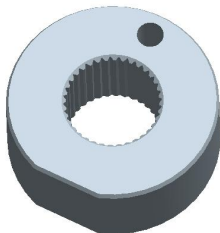
All late 50 Series combines with a Moisture Sensor mounted to the side of the Clean Grain Elevator require a software upgrade to be compatible with ATU. This software can be obtained by downloading the latest GreenStar System Update from StellarSupport.com which was released on August 8th, 2006.

Notes:

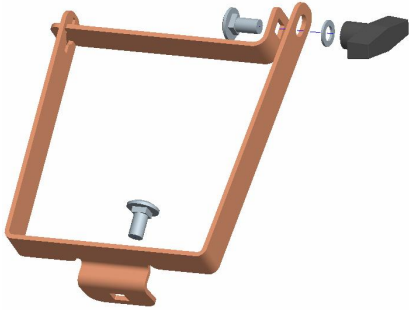
1. If GS2 functionality is required in conjunction with the use of a moisture sensor mounted to the side of the clean grain elevator please see your John Deere dealer to load the newest side mount moisture sensor software (7.00D) to the machine.
2. AutoTrac requires Terrain Compensation (TCM or iTC receiver).

AutoTrac Universal Steering Kit Components Used:

Spline/Bushing: Straight (PF12168)



Anti-Rotation Bracket: PF90510 included Supplemental Kit “L”



Recommended Motor Mounting Directions: 6 o'clock

Operator Presence Detection: Operator Activity Monitor

Initial Recommended Sensitivity Settings

Steering Wheel Speed: 190

Acquire Sensitivity: 90

Line Sensitivity Tracking: 180

Line Sensitivity Heading: 110

Steering Asymmetry: 100

Tested Accuracy Results

Initial testing with settings above on flat ground provided information to calculate the system errors below.

Customers should experience errors at or below this level **50%** of the time.

Pass to Pass Errors (inch)	Straight Track	
	Low speed	High Speed
SF1	4.5	4.5
SF2	1.5	1.6
RTK	1.0	1.0

Customers should experience errors at or below this level **95%** of the time.

Pass to Pass Errors (inch)	Straight Track	
	Low speed	High Speed
SF1	13.2	13.2
SF2	4.5	4.7
RTK	2.4	2.7

***** These are calculated errors, depending on field conditions, vehicle set up, and implement set up you may observe accuracies different than listed above.*****

(Note: GreenStar components and AutoTrac software are also required to operate your AutoTrac Universal Steering Kit)