

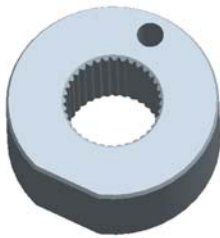
Platform Specific Information for:
John Deere NA 6X15 Row Crop Tractors
(6215/6415/6615/6715)

Required Kits:

1. AutoTrac Universal Steering Kit (PF90386)

AutoTrac Universal Steering Kit Components Used:

Spline/Bushing: Straight (PF12168)



Anti-Rotation Bracket: Rod Assembly (PF80904), Washer (PF12336)



Recommended Motor Mounting Directions: 6 o'clock

Seat Switch Connector: Standard Seat Switch Harness PF80865 (use white connectors)

ATU Harness 2/4 Pin Connection Location:

GreenStar Harness in side Panel

Initial Recommended Sensitivity Settings

Steering Wheel Speed: 200

Acquire Sensitivity: 150

Line Sensitivity Tracking: 150

Line Sensitivity Heading: 150

Disengagement Force: Lo

Tested Accuracy Results

Initial testing with settings above on flat ground provided information to calculate system errors below.

Customers should experience errors at or below this level **50%** of the time.

Pass to Pass Errors (inch)	Straight Track	
	Low speed High Draft	High Speed Low Draft
SF1	4.7	4.6
SF2	2.0	1.8
RTK	1.5	1.3

Customers should experience errors at or below this level **95%** of the time.

Pass to Pass Errors (inch)	Straight Track	
	Low speed High Draft	High Speed Low Draft
SF1	13.7	13.5
SF2	5.9	5.4
RTK	4.5	3.7

***** These are calculated errors, depending on field conditions, vehicle set up, and implement set up you may observe accuracies different than listed above.*****

(Note: GreenStar components and AutoTrac software are also required to operate your AutoTrac Universal Steering Kit)