

Platform Specific Information for:
Miller Nitro 2200 Series Sprayer
(2200T-SS/2200T/2200HT/2200T-ET/2275HT)

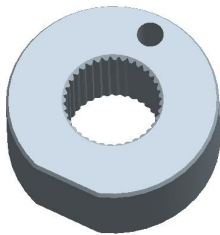
Required Kits:

1. GreenStar Ready Universal Guidance Kit (PF90420)
2. AutoTrac Universal Steering Supplemental Kit – “C” (PF90510)

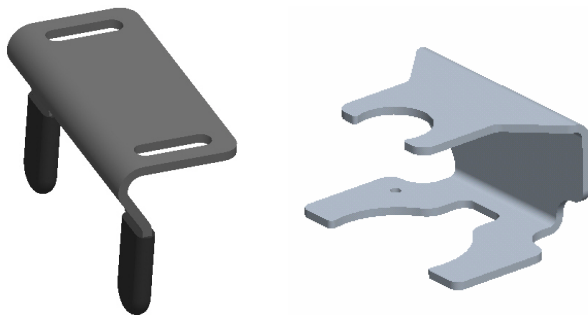
Note: In some cases, modification of the cab may be necessary to facilitate wire harness routing for the GPS receiver. If a modification is required, installers should fill any gaps between the harness and the cab to maintain cab seal and sound integrity. Sealant R46727 is recommended for filling these gaps

AutoTrac Universal Steering Kit Components Used:

Spline/Bushing: PF12168 from base ATU kit



Anti-Rotation Bracket: PF12324 from supplemental kit “C” and bracket PF80869 from base ATU kit



Recommended Motor Mounting Directions: 6 o'clock

Operator Presence Detection: Operator Activity Monitor

Initial Recommended Sensitivity Settings

Steering Wheel Speed: 190

Acquire Sensitivity: 90

Line Sensitivity Tracking: 200

Line Sensitivity Heading: 140

Steering Asymmetry: 100

Tested Accuracy Results

Initial testing with settings above on flat ground provided information to calculate system errors below.

Customers should experience errors at or below this level **50%** of the time.

Pass to Pass Errors (inch)	Straight Track	
	Low speed	High Speed
SF1	4.4	4.5
SF2	1.5	1.7
RTK	0.9	1.2

Customers should experience errors at or below this level **95%** of the time.

Pass to Pass Errors (inch)	Straight Track	
	Low speed	High Speed
SF1	13.2	13.4
SF2	4.6	5.2
RTK	2.6	3.5

***** These are calculated errors, depending on field conditions, vehicle set up, and implement set up you may observe accuracies different than listed above.*****

(Note: GreenStar components and AutoTrac software are also required to operate your AutoTrac Universal Steering Kit)