

Platform Specific Information for:
NH Versatile 9X84 4WD Tractor
(9284/9484/9684/9884)

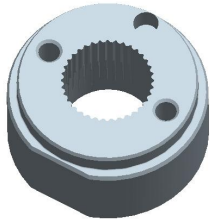
Required Kits:

1. GreenStar Ready Universal Guidance Kit (PF90420)
2. AutoTrac Universal Steering Supplemental Kit – “D” (PF90437)

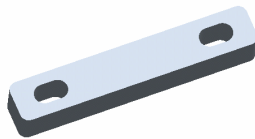
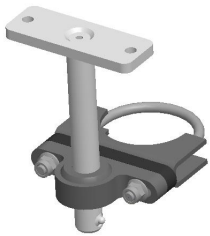
Note: Telescoping washer included in the primary ATU kit may require a small amount of filing to allow it to fit onto the steering shaft rod.

AutoTrac Universal Steering Kit Components Used:

Spline/Bushing: PF12167 from base ATU kit



Anti-Rotation Bracket: Spacer PF12335 from PF90437 Kit and Rod Assembly PF80904 from base ATU kit



Recommended Motor Mounting Directions: 6 o'clock

Operator Presence Detection: Operator Activity Monitor

Initial Recommended Sensitivity Settings

Steering Wheel Speed: 80

Acquire Sensitivity: 80

Line Sensitivity Tracking: 140

Line Sensitivity Heading: 100

Steering Asymmetry: 100

Tested Accuracy Results

Initial testing with settings above on flat ground provided information to calculate system errors below.

Customers should experience errors at or below this level **50%** of the time.

Pass to Pass Errors (inch)	Straight Track	
	Low speed	High Speed
SF1	4.5	4.6
SF2	1.7	1.9
RTK	1.1	1.5

Customers should experience errors at or below this level **95%** of the time.

Pass to Pass Errors (inch)	Straight Track	
	Low speed	High Speed
SF1	13.3	13.7
SF2	5.0	5.8
RTK	3.2	4.4

***** These are calculated errors, depending on field conditions, vehicle set up, and implement set up you may observe accuracies different than listed above.*****

(Note: GreenStar components and AutoTrac software are also required to operate your AutoTrac Universal Steering Kit)