

**Platform Specific Information for:**  
**Spray Coupe 4X50 Sprayers**  
**(4450/4650)**

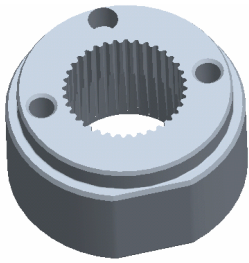
**Required Kits:**

1. GreenStar Ready Universal Guidance Kit - PF90420
2. AutoTrac Universal Steering Supplemental Kit – “K” PF90464
3. ATU Horn Kit - PF90452 through Service Parts

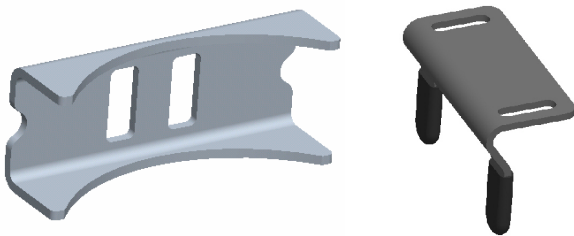
Note: In some cases, modification of the cab may be necessary to facilitate wire harness routing for the GPS receiver. If a modification is required, installers should fill any gaps between the harness and the cab to maintain cab seal and sound integrity. Sealant R46727 is recommended for filling these gaps

**AutoTrac Universal Steering Kit Components Used:**

**Spline/Bushing:** PF12464 from supplemental Kit “K”



**Anti-Rotation Bracket:** Kit “K” with bracket PF80869 from base ATU kit.



**Recommended Motor Mounting Directions:** 6 o'clock

**Operator Presence Detection:** Operator Activity Monitor

**Initial Recommended Sensitivity Settings**

**Steering Wheel Speed:** 190

**Acquire Sensitivity:** 80

**Line Sensitivity Tracking:** 200

**Line Sensitivity Heading:** 140

**Disengagement Force:** High

**Tested Accuracy Results**

Initial testing with settings above on flat ground provided information to calculate the system errors below.

Customers should experience errors at or below this level **50%** of the time.

Pass to Pass Errors (inch)	Straight Track	
	Low speed	High Speed
SF1	4.8	5.0
SF2	2.3	2.7
RTK	1.9	2.3

Customers should experience errors at or below this level **95%** of the time.

Pass to Pass Errors (inch)	Straight Track	
	Low speed	High Speed
SF1	14.2	14.7
SF2	6.9	7.9
RTK	5.7	6.8

**\*\*\* These are calculated errors, depending on field conditions, vehicle set up, and implement set up you may observe accuracies different than listed above.\*\*\***

*(Note: GreenStar components and AutoTrac software are also required to operate your AutoTrac Universal Steering Kit)*