

Instructions for Downloading the Latest Software Enhancements for the Greenstar 2 System

(Updated July 22, 2009)



1. Go to http://stellarsupport.deere.com/en_US/support/greenStarSystem.html
2. Click on **Download GS2 Software** or **Download 1800 Software**.

JOHN DEERE Agriculture

USA/Canada Home | Worldwide Sites | Our Company | Contact Us | Site Search

Agricultural Home | Products & Equipment | Services & Support | Parts | Finance Solutions | Where to Buy | Special Offers | Info Center

Support & Downloads

StellarSupport Home | **GreenStar™ System Instructions & Update - July 22 2009**

Support & Downloads

Training

Activations & Subscriptions

Answer Center

What's New

Growing Innovations

Dealer Corner

Contact Us

Profile Maintenance

StellarSupport Global Home

GreenStar System Documentation

- Software Update 2009-2 Release notes
- GreenStar Operator Manuals & Guides

GreenStar 2 System 2100/2600 Update

Version: 2.4.1156

[Installation Instructions for the GS2 System Update](#)

Download GS2 Software

Displays should be using software version 2.1 or newer before installing this update. If not, please contact your John Deere Dealer

GreenStar 2 System 1800 Update

Version: 2.0.705

Download 1800 Software

3. Click Save

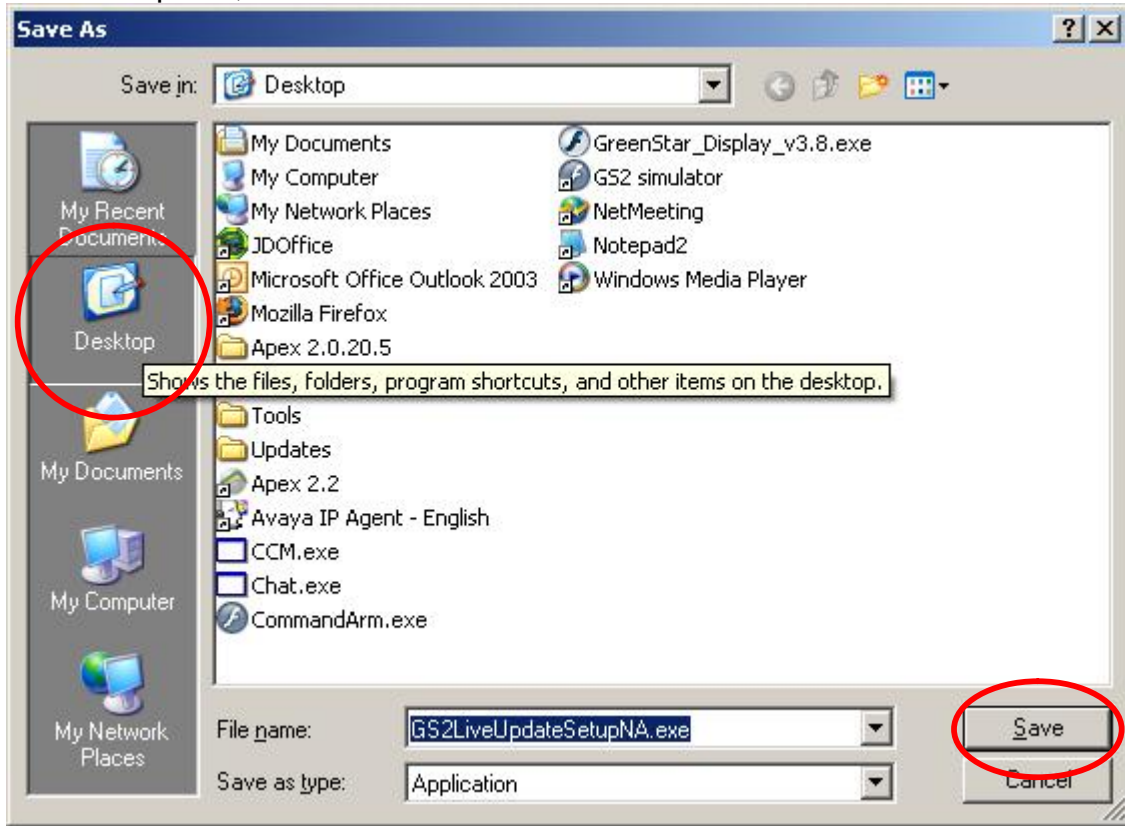
File Download - Security Warning

Do you want to run or save this file?

Name: GS2LiveUpdateSetupNA.exe
Type: Application, 23.8MB
From: stellarsupport.deere.com

While files from the Internet can be useful, this file type can potentially harm your computer. If you do not trust the source, do not run or save this software. [What's the risk?](#)

4. Click on Desktop first; then Save.



5. Once the application has finished downloading locate it in your desktop. *Note: If you get the following window, click Run and go to step 7. If you do not get the window, minimize all windows and go to step 6.*



6. Locate the Gs2LiveUpdateSetupNA.exe icon in your desktop and double click it.



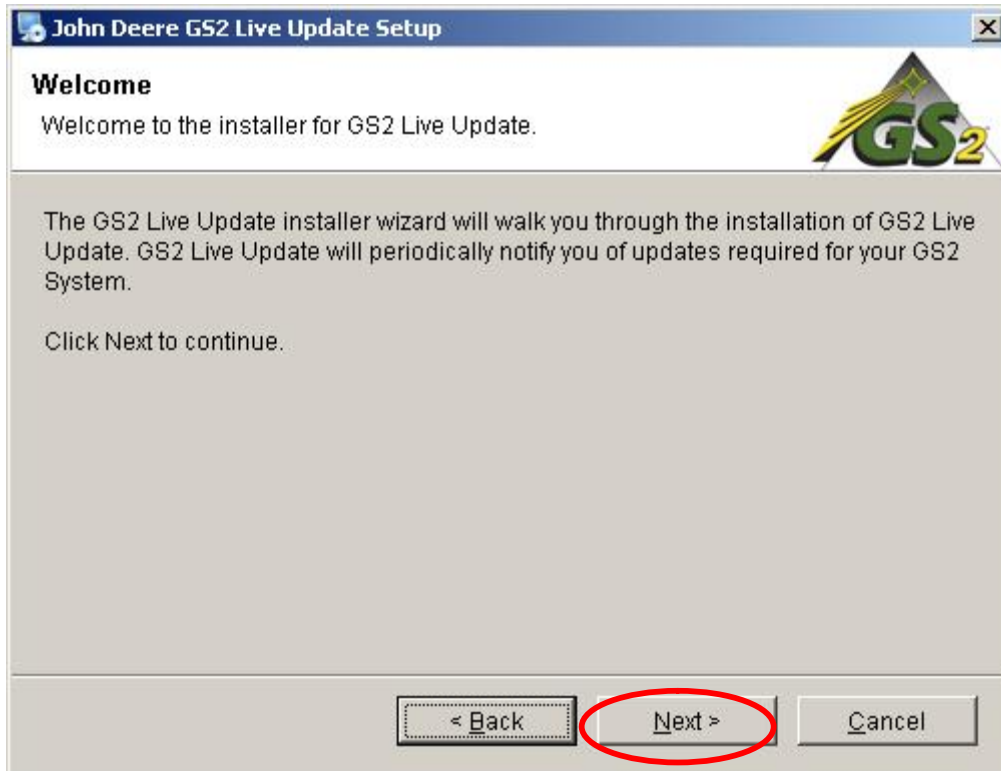
7. Select your country and language. Press next.



8. Please check the box related to the type of display(s) you currently own in order to download the appropriate software. **Note:** *It is recommended that if updating both an 1800 and a 2100/2600 display that you select to download both software types at the same time.*



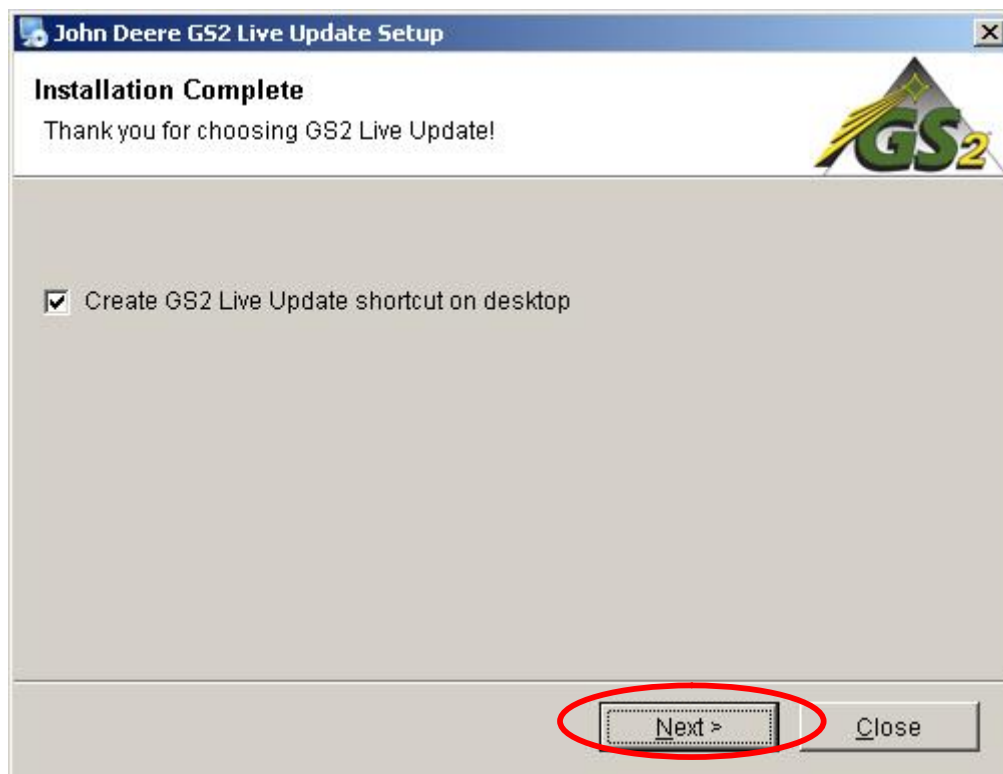
9. Click Next to continue.



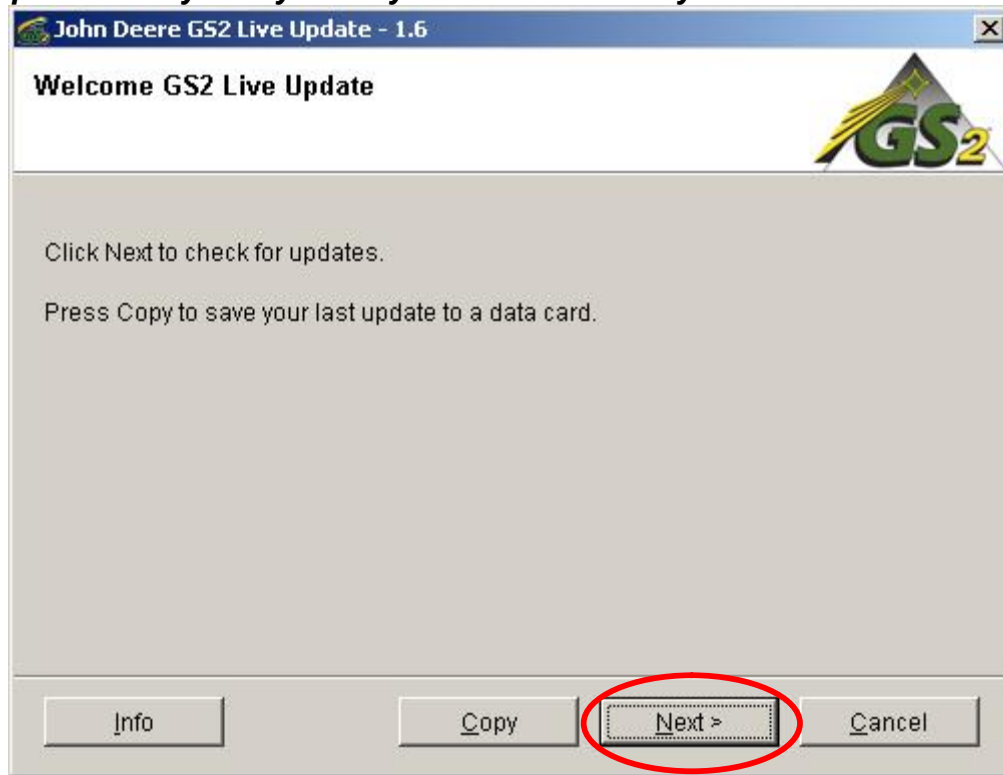
10. Click on "I agree to the terms of this license agreement" and Next to continue.



11. Make sure the Create GS2 Live Update shortcut on desktop is selected and click Next.



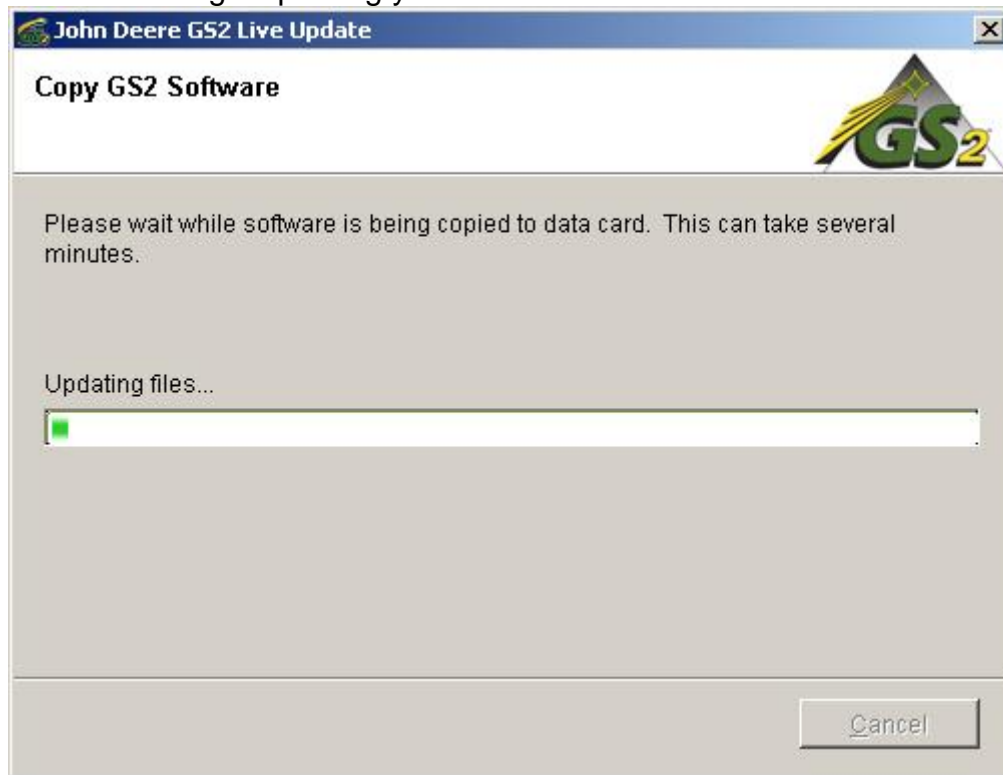
12. Click Copy to save your last update to a data card or Next to check for the latest updates. We chose the former option. **Before continuing, make sure your PC Card is inserted in the computer. Verify that you only have one card in your card reader.**



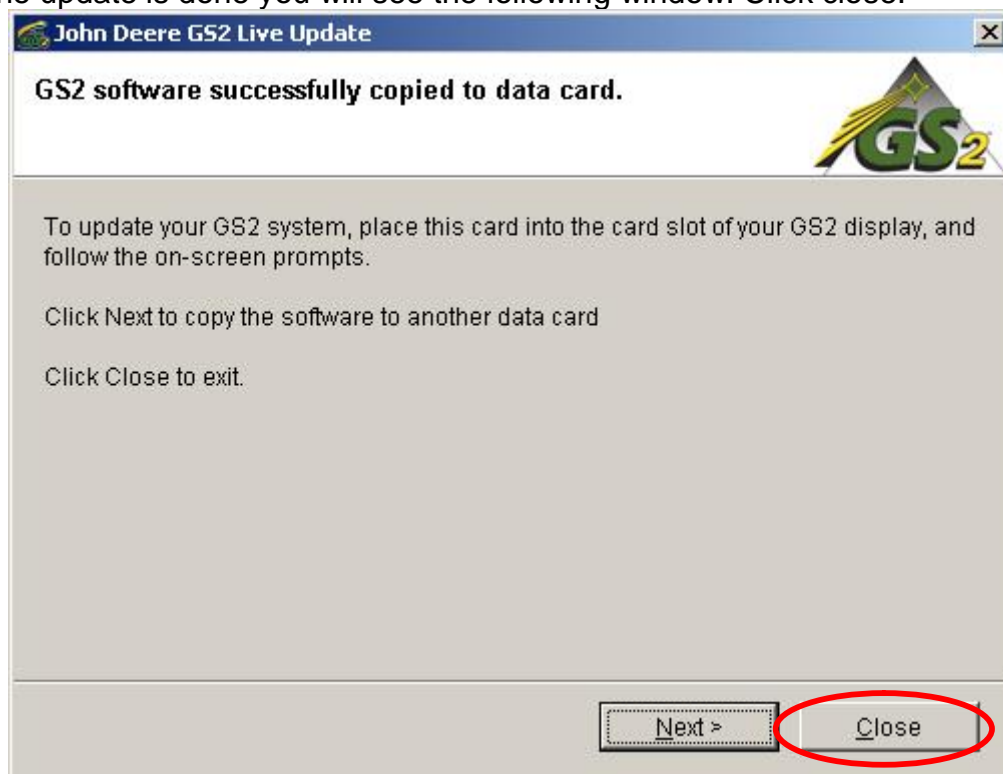
13. Select the card drive. If your card does not show up, unplug the card reader and plug it in another usb port, press Refresh until it appears. Click on **Copy Now** to copy the updates.



14. The application will begin updating your flash card.



15. When the update is done you will see the following window. Click close.



16. Remove the flash card from the reader in the computer.
17. Take the flash card to the GS2 System. With the system off, insert the card in the card bay. Turn on the key in the machine to power the display. The GS2 will indicate it has found updates in the card and will prompt you to update the software.

