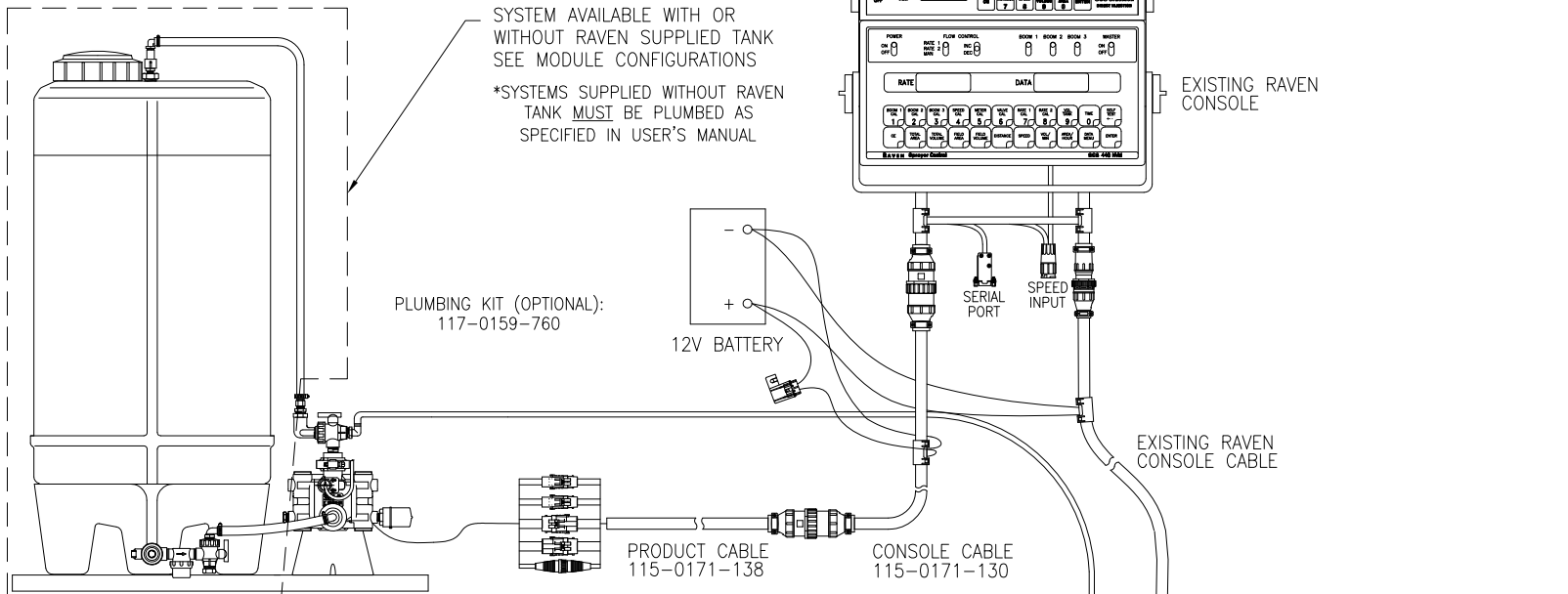


# SCS SIDEKICK INJECTION SYSTEM

INJECTION MODULE CONFIGURATIONS:  
 HIGH VOLUME WITH TANK: 117-0159-915  
 LOW VOLUME WITH TANK: 117-0159-976  
 HIGH VOLUME WITHOUT TANK: 117-0159-916  
 LOW VOLUME WITHOUT TANK: 117-0159-975

SCS-SIDEKICK  
 063-0171-964



SYSTEM AVAILABLE WITH OR WITHOUT RAVEN SUPPLIED TANK SEE MODULE CONFIGURATIONS

\*SYSTEMS SUPPLIED WITHOUT RAVEN TANK MUST BE PLUMBED AS SPECIFIED IN USER'S MANUAL

PLUMBING KIT (OPTIONAL):  
 117-0159-760

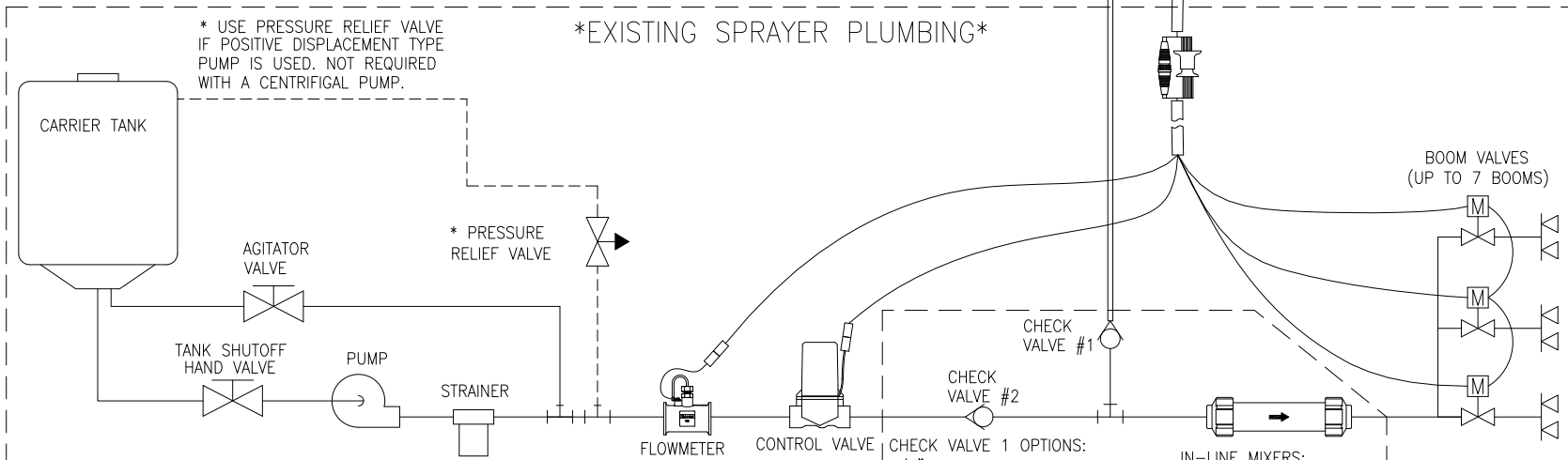
12V BATTERY

EXISTING RAVEN CONSOLE

EXISTING RAVEN CONSOLE CABLE

PRODUCT CABLE  
 115-0171-138

CONSOLE CABLE  
 115-0171-130



\* USE PRESSURE RELIEF VALVE IF POSITIVE DISPLACEMENT TYPE PUMP IS USED. NOT REQUIRED WITH A CENTRIFUGAL PUMP.

\*EXISTING SPRAYER PLUMBING\*

\* PRESSURE RELIEF VALVE

BOOM VALVES  
 (UP TO 7 BOOMS)

CHECK VALVE #1

CHECK VALVE #2

CHECK VALVE 1 OPTIONS:  
 1/2": 333-0011-088  
 3/8": 333-0011-078 (N-SERV)

CHECK VALVE 2 OPTIONS:  
 1": 333-0011-090  
 1 1/4": 333-0011-091  
 2": 333-0011-093

IN-LINE MIXERS:  
 1": 063-0171-303  
 1 1/4": 063-0159-632  
 2": 063-0171-300  
 3" S.S.: 333-9000-010

ECO NO.	PROD. MGR.	SERV. MGR.	PROD. CHAMP.	ENG.	DRAFT.	REV.	DRAWING NO.
E13232	JB	TAC	CJA	LAA1	MAP	A	054-2850-002